

# Montpellier

DOMESTIC APPLIANCES

LAUNDRY DISHWASHING COOKING COOLING

## Installation & Operating Instructions



10kg Washer and Dryer in White  
**MDAWD10614W**

Please read these instructions carefully before attempting to install or use this appliance.  
We recommend that you keep these instructions in a safe place for future reference.

# Welcome

Thank you for choosing this Montpellier appliance.

Your appliance has been designed to provide you with the best combination of style, reliability and performance, to give you years of trouble-free use.

You may be familiar with a similar product, but please take the time to read these instructions carefully before installing or using your appliance to ensure that you get the most from your purchase and keep the manual for future reference.

The design and specifications are subject to change without prior notice for product development.

## Montpellier

montpellier-appliances.com

# 2 YEAR GUARANTEE

**PARTS & LABOUR**

**ACROSS ALL OUR MODELS**

Your appliance is covered by a comprehensive two year Parts & Labour Guarantee. In the unlikely event that you experience a problem with your appliance, you can rest assured that you are fully protected against the cost of repairs for the first 24 months. Please note that any claim must be accompanied by the model reference number, serial number and proof of purchase.

To activate your guarantee, you will need your product serial number. This can be found inside your appliance.

**NB:** Please make sure that you keep a copy of your original sales invoice as this will be needed if any service call is required.





**There are three ways to register your Guarantee:**

**Online:** Visit the Support page on our website and complete the online Product Registration form.

[www.montpellier-appliances.com](http://www.montpellier-appliances.com)

**By Post:** Simply detach and fill in the form provided, attach a stamp and send it in the post. Don't forget to include your e-mail address so that we can send confirmation through to you.

**By Phone:** Contact our warranty registration department on **08081 961 388**

Icon	Type	Meaning
	Warning	May Cause Serious Injury
	Risk of Electric Shock	Dangerous Voltage Risk
	Fire	Warning, Risk of Fire/Flammable Materials
	Caution	Risk of Damage/ Important Information

# Contents

---

General Safety Instructions	4
Child Safety	5
Disposal of the Appliance	6
Installation	7
What's Included	8
Removing the Transport Bolts	9
Adjusting the Feet	10
Technical Data	12
Description of the Appliance	13
Display	14
Preparing and Sorting the Laundry	15
Sorting by Care Labels	16
Various Cycles and Functions	17
Various Cycles	18
Special Wash Cycles	19
How to use the Appliance	21
Safety	23
TroubleShooting	25
Product Fiche	29
Here to Help	32

## **DEAR CUSTOMER:**

Thank you for buying this product. To ensure that you get the best results from this appliance, please take time to read through the simple instructions in this booklet. Please ensure that the packing material is disposed of in accordance with the current environmental requirements. When disposing of any old appliances please contact your local waste disposal department for advice on safe disposal. This appliance must only be used for its intended purpose.

## General Safety Instructions

When properly maintained, this appliance is designed to be safe and reliable. Read and understand all safety instructions before use and keep them for future reference.

These instructions are intended to reduce the risk of fire, electric shock, injury or damage. The manufacturer accepts no liability for damage caused by failure to follow these instructions, misuse of the appliance, or incorrect operation.

### Permitted Use

This appliance is intended for household and similar applications, including:

- Staff kitchen areas in shops, offices and other small-scale working environments
- Farmhouses
- Bed & breakfast and similar environments

This appliance is not intended for commercial or professional use.

This appliance is not suitable for outdoor use.

Children aged 8 years and above, and persons with reduced physical, sensory or mental capabilities, or lack of experience and knowledge, may use this appliance only if supervised or instructed in safe use and understand the hazards involved.

Children must not play with the appliance. Cleaning and maintenance must not be carried out by children without supervision.

Do not store explosive or flammable substances such as aerosol cans, petrol or solvents inside the appliance.

Do not use electrical appliances inside the food storage compartments unless recommended by the manufacturer.

Always follow food storage guidelines and manufacturer instructions for safe use.

### Installation Safety

The appliance must be handled and installed by at least two people to avoid injury.

Keep children away during installation.

After unpacking, check the appliance for damage. If damaged, do not use it and contact your supplier.

Ensure the appliance does not damage the power cable during installation.

Do not install the appliance in:

- Damp or humid environments
- Areas exposed to extreme temperatures (below 5°C or above 35°C)
- Locations exposed to flammable gases or vapours

Ensure the appliance is placed on a level, stable surface using the adjustable feet.

Do not install the appliance outdoors, even in sheltered areas.

Ensure ventilation openings are not obstructed.

After installation, wait several hours before switching on the appliance to allow it to stabilise.

Keep all packaging materials out of reach of children to prevent suffocation.

## **Electrical Safety**

The appliance must be earthed in accordance with UK electrical safety standards.

The mains socket must be easily accessible after installation.

Do not use extension leads, multi-sockets or adapters.

Do not operate the appliance if the power cable or plug is damaged.

If the power cable is damaged, it must be replaced by the manufacturer or a qualified technician.

Never touch the appliance with wet hands or operate it while barefoot.

Disconnect the appliance by pulling the plug, not the cable.

Ensure the power supply is suitable for the appliance (typically 220–240V, 50Hz).

## **Cleaning and Maintenance Safety**

Always switch off and unplug the appliance before cleaning or maintenance.

Do not use steam cleaners or high-pressure cleaning equipment.

Use only suitable cleaning materials as recommended in this manual.

Take care when cleaning internal surfaces to avoid injury.

## **Service and Repair**

Do not attempt to repair or modify the appliance yourself.

Repairs must only be carried out by authorised service personnel.

In the event of a fault:

- Switch off the appliance
- Disconnect from the power supply
- Contact an authorised service centre

Only use original spare parts.

Failure to follow these instructions may result in safety risks and will invalidate the warranty.

## **Child Safety**

Children aged 0–3 years must be kept away from the appliance.

Children aged 3–8 years must be supervised at all times.

Do not allow children to play with or inside the appliance.

Always close the lid properly after use.

Remove doors or lids before disposal to prevent entrapment.

## **Disposal of Packaging**

All packaging materials are recyclable. 

Dispose of packaging in accordance with local authority regulations.

Keep packaging materials away from children.

## Disposal of the Appliance

This appliance is manufactured using recyclable materials.

Dispose of the appliance in accordance with local waste disposal regulations.

Do not dispose of the appliance with household waste.

Take the appliance to an authorised recycling facility for electrical and electronic equipment (WEEE).

Proper disposal helps prevent harm to the environment and human health.



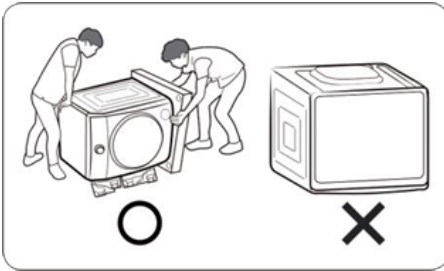
## Installation

Read these instructions carefully, as they contain important information regarding the safe installation and operation of the appliance.

Follow these instructions carefully to ensure correct installation and to help prevent accidents during use.

## Unpacking

- Remove the appliance from its packaging.
- To remove the base of the packaging, do not tip the appliance onto its front. If you need to lay the appliance down to remove the carton base, protect the sides and lower it carefully. Never lay the appliance on its back or front.



- Check that the appliance has not been damaged during transport. Ensure that all items listed in the “What’s Included” section are present. If the appliance is damaged or any items are missing, contact the retailer and do not proceed with installation.

**WARNING:** Packaging materials can be dangerous to children. Keep all packaging (plastic bags, polystyrene, etc.) out of reach of children.

## Carrying the Appliance

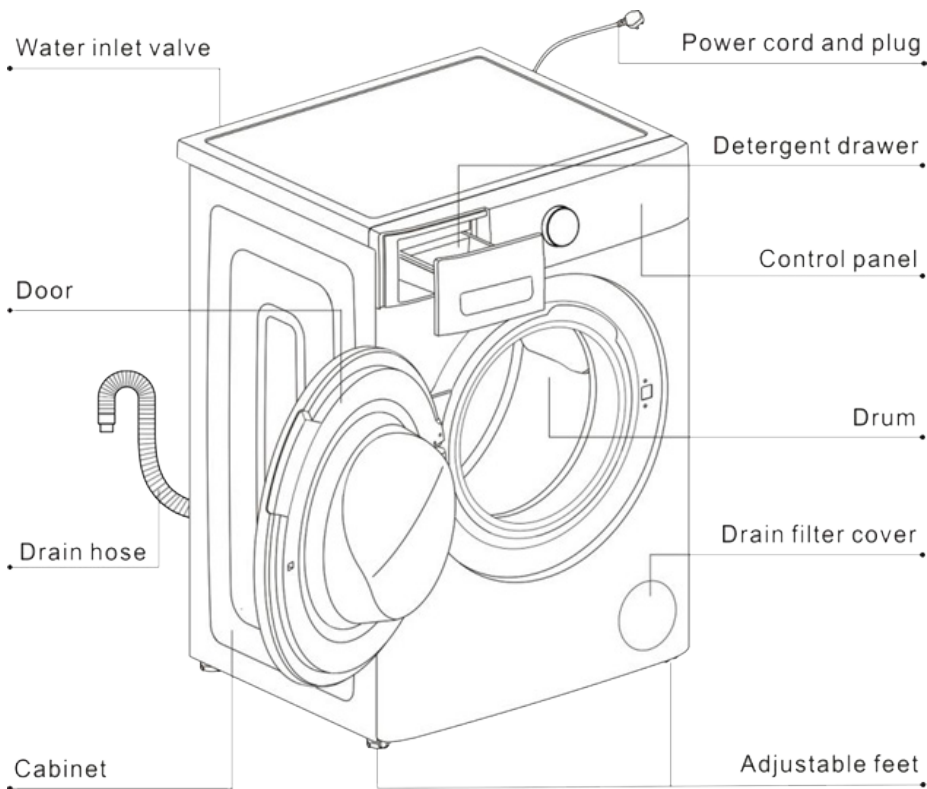
- Do not attempt to move the appliance alone.







- Tilt the appliance backwards. One person should stand behind and hold the top edge, while another supports the base at the front.
- Wear protective gloves when lifting or moving the appliance to prevent injury.
- When transporting, ensure the front of the appliance does not come into contact with the trolley frame.

## What's Included

- Description of parts



- Accessories

User manual	Water inlet hose	Wrench	Cover caps
1 copy	1 pcs	1 pcs	4 pcs
			

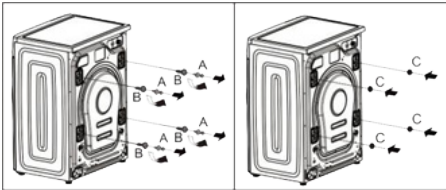
## Removing the Transport Bolts

### CAUTION – Risk of Damage or Injury

- The appliance is secured with transport bolts to prevent damage during transit. These must be removed before use.
- Failure to remove the transport bolts may result in excessive vibration, noise, and damage to the drum.
- Keep the bolts in a safe place for future transportation.
- If a pedestal is used, it must be installed before removing the bolts.
- Reinstall the bolts if the appliance is transported again.

### Procedure:

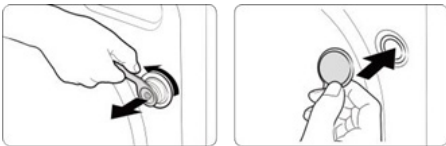
- Loosen and remove the four transport bolts using the supplied spanner.
- Remove the spacer tubes. If they fall inside the appliance, tilt the unit forward to retrieve them.
- Fit the supplied cover caps into the bolt holes.



### NOTE

Before transporting the appliance again:

- Reinstall the transport bolts
- Secure the power cable to the rear of the appliance



## Choosing the Right Location

### Location Requirements

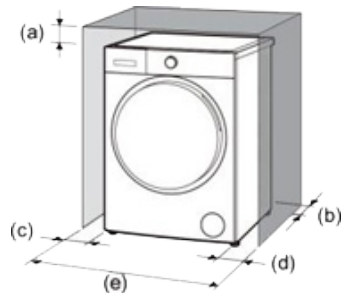
- Install the appliance on a solid, level surface. Do not place it on carpet or wooden flooring.
- Do not install on unstable or homemade platforms. If unavoidable, the platform must be reinforced and secured.
- Keep the area dry and well ventilated.
- The appliance must be installed in a room with a suitable drainage system.
- Do not place small appliances (such as microwaves) on top.
- Keep away from open flames and heat sources. Do not place pressurised containers on the appliance.
- Do not position the appliance over an open drain.

### Clearance Requirements

Ensure adequate space around the appliance:

- At least 3 cm above
- At least 5 cm behind
- At least 5 cm on each side
- At least 70 cm in front

### CAUTION



Do not allow metal parts of the appliance to come into contact with metal sinks or other appliances.

### Levelling the Appliance

Proper levelling ensures quiet operation and reduces vibration.

- Place the appliance on a firm, level surface (preferably in a corner).

- Adjust the feet if the floor is uneven. Do not place objects under the feet.
- Extend the feet only as much as necessary.
- Use a spirit level to check alignment side-to-side and front-to-back.
- Press each corner to ensure the appliance does not wobble.
- Tighten the locknuts to secure the feet once level.

### Adjusting the Feet

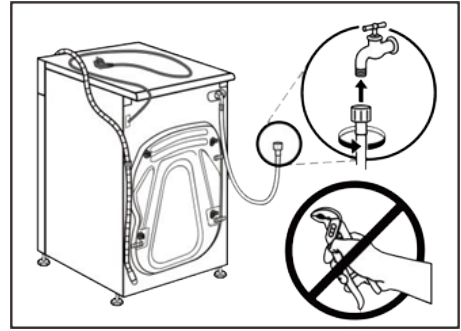
- Slightly lift the appliance to relieve pressure on the foot.
- Turn the foot to adjust height as required.
- Tighten the locknut once the correct height is achieved.

### Connecting Water Supply and Electricity

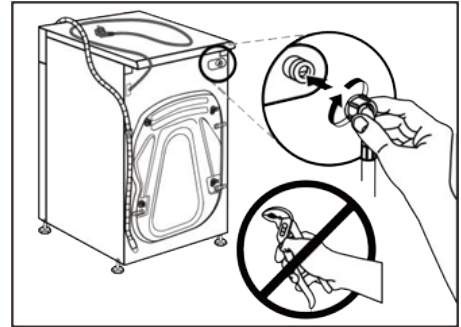


### Water Inlet Hose

- Connect one end of the hose to a cold water tap and tighten by hand.
- Allow water to run briefly before connecting.



- Attach the other end to the appliance inlet valve.
- Turn on the water slowly and check for leaks.

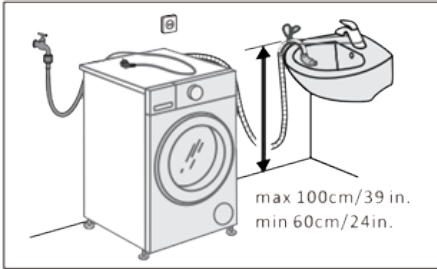


- Important:
- Do not twist or damage the hose
- Do not use second-hand hoses
- Use only the supplied hose
- Water pressure must be between 0.03–1.0 MPa

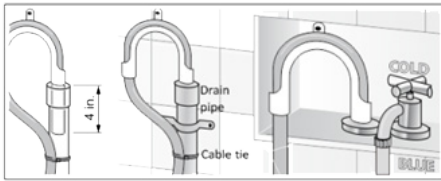
## Drain Hose

### Height Requirements

- Minimum: 60 cm
- Maximum: 100 cm

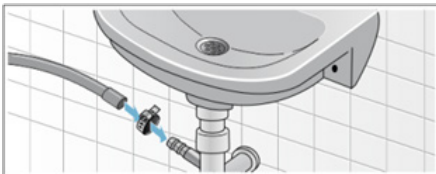


## Standpipe Installation



- Fit the hose into the standpipe using an elbow connector (4"/100mm from end of the hose as shown).
- Do not insert too far, as this may cause siphoning.
- Secure with a cable tie.

## Sink Connection



- Attach the hose securely using a suitable hose clip.

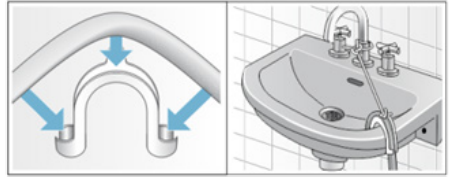
### **WARNING** – Scalding Risk

Hot water may be discharged during operation. Avoid contact.

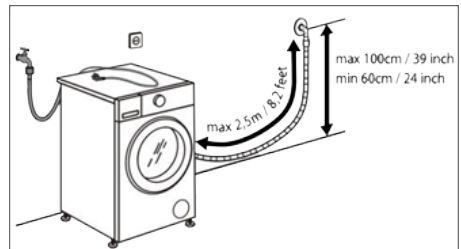
### Ensure:

- The hose does not sit in standing water

- The drain is not blocked
- The hose is securely fixed



- Not advisable to use drain hose extensions, unless absolutely necessary. The extension must have the same diameter as the original hose and must not exceed 250cm in length.



## Electrical Connection

Before connecting to the mains:

- Ensure the socket is properly earthed
- Check voltage matches the rating plate
- Ensure the socket can handle the appliance load

### **WARNING** – This appliance must be earthed

- Do not use extension leads or adapters
- Do not plug/unplug with wet hands
- Do not use if the cable is damaged

## Cable Replacement

If the power cable is damaged, it must be replaced by a qualified professional.

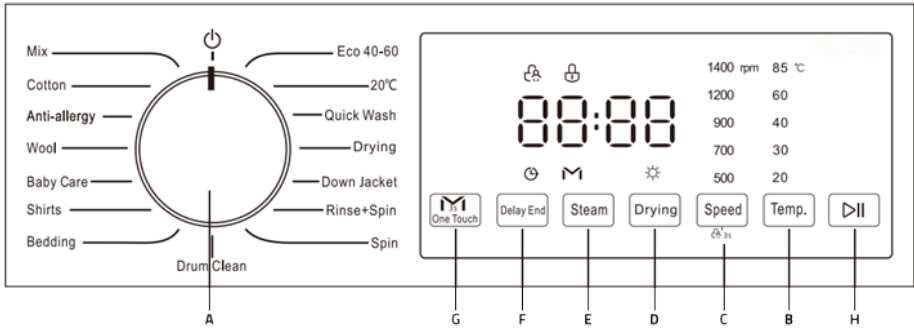
## Disposal

- Cut off the plug before disposal
- Render the plug unusable
- Dispose of the appliance according to local regulations


## Technical Data

Model	MDAWD10614W
Rated washing capacity (kg)	10.0
Rated drying capacity (kg)	6.0
Rated voltage	220-240V~
Rated frequency	50Hz
Rated drying power (W)	1600
Rated power (W)	2000
Washing noise level (dB)	62
Spinning noise level (dB)	76
Spin speed (rpm)	1400
Water pressure (MPa)	0.03 - 1.0
Waterproof grade	IPX4
Net weight (kg)	65
Outer dimension (WxDxH mm)	600 X 577 X 847

## DESCRIPTION OF THE APPLIANCE



**A — WASH CYCLE SELECTOR knob:** Used to select the desired wash cycle (see “Table of Wash Cycles”).

**OFF position:** Turn the indicator mark on the selector knob to the  symbol to switch the appliance off.

If the appliance is switched off during a wash cycle, the cycle will be cancelled.

### B — TEMP. button:

Press to change the water temperature for the current cycle.

Five temperature levels are available. When a temperature is selected, the corresponding indicator light will illuminate on the display.

### C — SPEED button:

Press to adjust the spin speed for the current cycle.

Five spin speed levels are available. When a speed is selected, the corresponding indicator light will illuminate.

### Child Lock function

While a cycle is running, press and hold the SPEED button for 3 seconds to activate or deactivate the Child Lock function.

For more details, see → Various Cycles and Functions.

### Cancelling the buzzer:

Press and hold the SPEED button and ONE TOUCH button simultaneously for at least 3 seconds to mute the buzzer during operation.

For more details, see → Various Cycles and Functions.

### D — DRYING button:

Press to select the drying type or drying time. The selected setting will be shown on the digital display.

Some programmes do not include a drying function.

For more details, see → Various Cycles and Functions.

### E — STEAM button:

Press to activate the Steam wash cycle.

For more details, see → Various Cycles and Functions.

### F — DELAY END button:

Press to set the delayed end time for the programme.

For more details, see → Various Cycles and Functions.

### G — ONE TOUCH button:

Press to select the One Touch wash cycle.


For more details, see → Various Cycles and Functions.

### H — START/PAUSE button:

Press and hold to start or pause a wash cycle.

- Adding laundry during a cycle:

Once the cycle has started, press and hold the button to pause.

If the DOOR LOCK indicator  is off, the door can be opened to add or remove items.

Press the button again to resume the cycle.

For more details, see → Various Cycles and Functions.

## M — Display

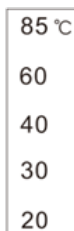


### 1 — Temperature Indicator

When a programme is selected, the default temperature indicator will illuminate.

You can change the temperature using the TEMP. button.

If all indicators are off, the appliance will use cold water only (no heating).

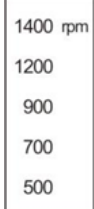


### 2 — Spin Speed Indicator

When a programme is selected, the default spin speed indicator will illuminate.

Adjust using the SPEED button.

If all indicators are off, the appliance will not perform a final spin.




### 3 — Door Lock Indicator

Indicates that the door is locked.

Wait until the light turns off before opening the door.



To open the door during a cycle, press START/ PAUSE 

If the indicator is off, the door can be opened.

### 4 — Child Lock Indicator

Indicates that the Child Lock is active and the control panel is locked.



### 5 — Delay End Indicator

Indicates that the Delay End function is active.



The remaining time will be shown on the display.

### 6 — One Touch Indicator

Indicates that the One Touch programme is selected.



Two different methods are available to activate this programme.

### 7 — Drying Function Indicator

Indicates that a drying function has been selected or is currently running.



### 8 — Digital Display

- Remaining wash time
- Delay end time
- Drying time
- Rinse count
- Fault codes



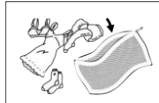
## Preparing and Sorting the Laundry

**Notice:** Risk of damage to the appliance or fabrics

Foreign objects (e.g. coins, paper clips, needles) may damage both laundry and the appliance.

Please follow these guidelines:

- Remove all loose items and metal objects from pockets.
- Brush away sand, coins, etc. from pockets and cuffs.
- Close zips and fasten buttons on items such as duvet covers.
- Remove curtain hooks or place them in a laundry bag.
- Wash delicate items (e.g. tights, lace curtains, small items) in a laundry bag or pillowcase.
- Turn certain garments inside out (e.g. knitwear, trousers, T-shirts).
- Ensure that underwired bras are suitable for machine washing.



⚠ Place underwired bras in a zipped or secured bag. Loose wires may damage the drum.

### Preparing Laundry for Drying

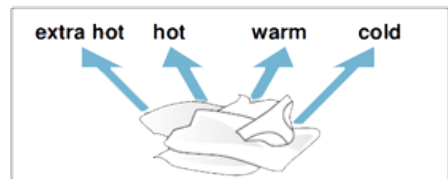
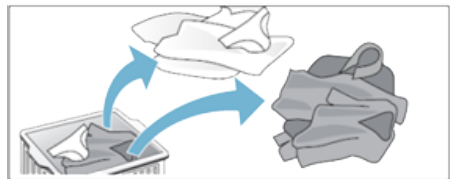
- Only dry items that have been washed, rinsed and spun.
- Remove as much water as possible before drying.
- Sort items by fabric type and required dryness level.
- Items requiring ironing can be folded after drying to evenly distribute remaining moisture.
- Use the correct amount of detergent as recommended by the manufacturer.

## Items Not Suitable for Tumble Drying

Laundry marked with:

☒ = Do not tumble dry

- Wool or wool blends (risk of shrinkage)
- Delicate fabrics such as silk or net curtains (risk of creasing)
- Foam rubber or similar materials
- Items treated with flammable substances (explosion risk)
- Items with hair spray or similar residues
- Dripping wet laundry (energy waste and potential damage)



### Sorting by Colour and Soiling Level

- Wash whites and coloured items separately
- New coloured items may bleed dye
- Whites may become grey if washed with coloured items

### Degree of Soiling

- **Light:** No visible dirt, slight odours (e.g. lightly worn clothing)
- **Normal:** Visible dirt or minor stains (e.g. everyday clothing, towels)
- **Heavy:** Stains and heavy dirt (e.g. workwear, sportswear)

## Sorting by Care Labels

Care labels provide guidance on washing temperature, cycles, and ironing.

Always check garment labels before washing.

 Wash type	 Machine wash, normal/cotton	 Machine wash, permanent press	 Machine wash, delicate/gentle	 Hand wash only	 Do not wash	 Do not wring
 Water Temp.	 Water temperature 30 °C	 Water temperature 40 °C	 Water temperature 50 °C	 Water temperature 60 °C	 Water temperature 70 °C	 Water temperature 95 °C
 Bleach	 Any bleach	 Non chlorine bleach	 chlorine bleach	 Do not bleach		
 Tumble Dry type	 Normal/Cotton Heavy duty	 Permanent Press/Wrinkle resistant	 Delicate/Gentle	 Do not tumble dry		
 Tumble dry temp.	 High heat	 Medium heat	 Low heat	 No heat		
 Dry type	 Hang to dry	 Drip dry	 Dry flat	 Dry in the shade		
 Iron	 High heat	 Medium heat	 Low heat	 Do not iron		
 Dryclean	 Any solvent	 Perchloroethylene solvent	 Petroleum solvent	 Do not dryclean		

## Various Cycles and Functions

**Table of Wash Cycles**

Wash cycle	Temp. °C (Max)	Max.Load(kg)		Specification	Kind of detergent		
		Washing	Drying		Detergents		Softener
					Universal	Special	
Mix	60	10	6	For washing lightly to normally soiled mixed load of cotton and synthetic fabrics, white and colored items	L / P	---	O
Cotton	60	10	6	For daily items of cotton, linen and cotton blends, Energy efficiency test	L / P	---	O
Anti-allergy	85	3	3	For clothes that need to remove mites and allergens.	L / P	---	O
Wool	40	1	---	For machine washable wool and wool blend clothes	---	L	O
Baby Care	85	5	6	For kid's wear	L / P	---	O
Shirts	60	3	---	For shirts and women's blouses	L / P	L	O
Bedding	60	6	3	For large items such as blankets, curtains and bedspreads	L / P	---	O
Eco 40-60	40	10	6	Energy efficiency test program	L / P	---	O
20°C	30	2	---	For small amount of clothes that are easy to fade, the washer using only cold water without utilizing the washer's heater in this program	L / P	---	O
Quick wash	40	1	1	For small amount or lightly soiled garments that you want to finish washing quickly	L / P	---	O
Drying	---	---	6	For drying wet cotton fabric	---	---	---
Down Jacket	40	2	2	For down jacket which can be washed by machine	---	L	O
Rinse +Spin	---	10	6	Combines a rinse and spin for loads requiring an additional rinse cycle. Also use for loads that require rinsing only	---	---	O
Spin	---	10	6	This cycle uses a spin to shorten drying times for heavy fabrics or special-care items washed by hand	---	---	---
Drum clean	85	---	---	Clean the drum by removing dirt and bacteria from the drum. Make sure the drum is empty	---	---	---
M-Smart	40	5	---	Special cycle which can be started simply by pressing the <b>ONE-TOUCH</b> button	L / P	---	O

- L = Liquid detergent
- P = Powder detergent
- O = Optional
- --- = Not available
- Liquid detergent is not recommended when using delay start.

### Recommended usage:

- Standard detergent: 20°C to 80°C
- Wool detergent: 20°C to 40°C

Always follow detergent manufacturer instructions.

## Various Cycles

### M-Smart Wash Cycle

Automatically detects load weight and adjusts time and temperature accordingly.

During detection, **Ri** **t** **o** will appear on the display.

Activation methods:

- When ON: Press and hold ONE TOUCH for 3 seconds
- When ON: Press ONE TOUCH once, then press START/PAUSE button **▶||**

### Drying Programme

Setting "Wash + Dry"

Some wash programmes allow drying to be added.

- Load laundry and select a wash programme
- Press the Dry button to choose:

— Automatic Drying: Adjusts drying time automatically **Ri** **t** **o**

— Timed Drying: Select from preset times (30–240 minutes)

Press START/PAUSE to begin.

### Drying Only Programme

- Suitable mainly for cotton items
- Run a spin cycle first for best results
- Select Drying programme and choose drying mode
- Press START/PAUSE

### Down Jacket Drying

Use the "Wash + Dry" programme with:

- Down Jacket programme + Automatic Drying **Ri** **t** **o**

Do not use Drying Only mode.

Dry one jacket at a time for best results.

## Drying Precautions

- Drying time may increase if laundry retains excess moisture and is normal to display **0:00** for a while
- Water supply must remain on during drying
- Maximum drying time varies by model
- Start with shorter drying time and increase if needed
- Run a spin cycle before drying
- Untangle clothes before drying
- Large items may dry unevenly—extend time if needed
- Wool is not suitable for drying
- Do not dry items prone to shrinkage or deformation
- Some programmes do not support drying

## Drying Channel Cleaning

After selecting the wash cycle and options, but before starting the programme, press and hold this button for 3 seconds to enter the Drying Channel Cleaning programme. The digital display will show the running time of the programme **0:00**. Press the START/PAUSE button to begin.

This programme automatically removes lint accumulated in the drying channel, helping to improve drying performance.

This function is intended for maintenance only. Do not place any laundry in the drum when using this programme.

## Steam

A cycle designed for cotton garments that are not prone to fading.

- Steam treatment helps reduce creases, bringing garments to an ideal moisture level and making ironing easier.
- It can also help remove unpleasant odours from clothing.

## Special Wash Cycles

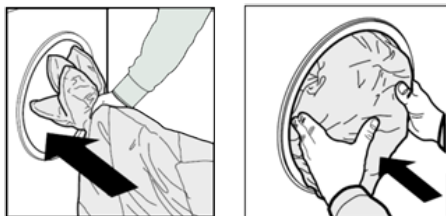
### Baby Care

A cycle designed to remove typical stains found on children's clothing while effectively eliminating detergent residue.

### Down Jacket

A cycle designed for washing down-filled items (maximum load 2.0 kg), such as cushions or padded jackets.

- Place items in the drum with edges folded inward (see figure).
- Do not exceed three-quarters of the drum capacity.
- For best results, use liquid detergent in the detergent drawer.



### Wool

A cycle specifically designed for wool fabrics.

- Ensure garments are labelled as machine washable.
- Remove items promptly after the cycle, reshape, and dry to prevent deformation.
- The water temperature must not exceed 40°C.
- Use a detergent specifically designed for wool and do not exceed 1.0 kg load.

## Various Functions

### Delay End

Press the DELAY END button to set the programme end time in 1-hour increments, up to 24 hours.

After selecting the desired programme (but before pressing START/PAUSE ▷||), press the DELAY END button until the required time is displayed (e.g. 8h). The indicator light ⏰ will illuminate.

**Note:** The total programme duration is included within the delay time.

### Example:

If the wash cycle lasts 1 hour 30 minutes and the delay is set to 8 hours, the appliance will delay the start so the programme finishes after approximately 8 hours.

### To cancel the Delay End function:

Turn the wash cycle selector knob to reset the programme. The indicator light will turn off.

### Notes:

- This function is not available on all programmes.
- The actual end time may vary depending on water pressure, load, and other conditions.

### Child Lock

The Child Lock prevents accidental operation.

- Press and hold the SPEED button for 3 seconds to activate or deactivate the function.
- When active, the indicator light 🔒 will illuminate.
- The control panel will be locked, and the door cannot be opened.
- All buttons and the selector knob (except the OFF position) will be unresponsive.

To switch off the appliance while Child Lock is active:

Turn the selector knob to the OFF position ⏻

When the appliance is turned back on, it will resume the previous programme. The Child Lock will be cancelled if the appliance is switched off.

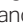
### Adding Laundry During Operation

To add or remove items during a cycle:

- Press and hold the START/PAUSE ▷|| button to pause the machine.
- If the DOOR LOCK indicator 🔒 is off, the door can be opened.
- Add or remove items as required.

- Close the door and press START/PAUSE ▷|| again to resume the programme.

**Note:**

If the water level or temperature is too high, the door will remain locked, display  and cannot be opened.

**Cancelling the Buzzer**

**To mute the buzzer:**

- Press and hold the SPEED and ONE TOUCH buttons simultaneously for at least 3 seconds.

**To restore the buzzer:**

- Repeat the same operation. A beep will confirm activation.

**Load Balancing System**

The appliance features an automatic load balancing system.

- During spinning, the machine redistributes laundry if it detects imbalance.
- If balance cannot be achieved, spinning will be skipped to prevent excessive vibration.

**If this occurs:**

- Stop the programme
- Redistribute the load manually
- Select the Spin programme again

**For best results:**

- Wash mixed loads (large and small items together)

**Note:**

Repeated balancing attempts may extend the spin time. This is normal and not a fault.

**Down Light**

- The down light remains on during programme and function selection.
- When paused, opening the door will activate the light.
- During operation, the light may change according to the wash stage.
- Pressing any button (except the power button) will also activate the light.

## How to use the Appliance

### Before Using for the First Time

Your appliance has been tested at the factory. As part of this process, various wash cycles are performed, so a small amount of water may remain inside the drum and drainage system.

Before using the appliance for the first time, run a Drum Clean cycle with no laundry and no detergent to ensure the system is clean.

### Daily Use

#### Preparing the Laundry

##### Empty pockets

- Coins, paper clips and similar items may damage both the laundry and the appliance.
- Tissues may break apart during washing and will need to be removed manually afterwards.

Close all zips, buttons and hooks. Tie any belts or ribbons

- Place small items (e.g. hosiery, belts) and items with hooks (e.g. bras) into a laundry bag or a zipped pillowcase.
- Remove curtain rings or place curtains inside a laundry bag with the rings.

##### Check fabric types and care labels

- Separate items by fabric type: cottons, synthetics, wool, hand-wash items, etc.
- Separate coloured and white items. Wash new coloured items separately.

##### Sort by size

- Wash items of different sizes together to improve washing efficiency and load distribution.

##### Delicate items

- Wash delicate fabrics separately using an appropriate programme.

### Using the Appliance

#### Load laundry

Open the door and place items loosely into the drum, one at a time. Do not overload. Refer to the Table of Wash Cycles for maximum load capacity.

#### Close the door

Ensure no items are trapped between the door glass and the seal. Close the door until it clicks securely.

#### Turn on the water supply

Ensure the appliance is connected to the mains water supply and the tap is fully open.

#### Select a programme

Turn the wash cycle selector knob to the desired programme. The display will show the estimated duration. Default temperature and spin speed will be set automatically.

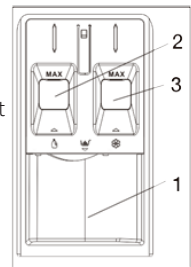
- To adjust temperature: press the TEMP. button
- To adjust spin speed: press the SPEED button
- To select options: press the relevant button(s); the indicator light will illuminate

If an incompatible option is selected, a buzzer will sound and the indicator light will flash.

#### Adding Detergent

Pull out the detergent drawer and add detergent and additives to the appropriate compartments.

- **Compartment 1:** Powder detergent
- **Compartment 2:** Liquid detergent (do not exceed MAX level)
- **Compartment 3:** Fabric softener or additives (do not exceed MAX level)



Follow the detergent manufacturer's instructions carefully.

#### Correct dosing:

- Improves cleaning performance
- Prevents residue on laundry
- Reduces waste and cost
- Protects the appliance

### Minimises environmental impact


Do not use hand-wash detergents, as they produce excessive foam.

### Use powder detergent for:

- White cottons
- Pre-wash cycles
- Temperatures above 60°C

### Starting a Programme



Press the START/PAUSE button 

- The indicator light will illuminate
- The door will lock and the DOOR LOCK indicator  will turn on

Do not open the detergent drawer while the programme is running.

Programme duration may vary depending on load balance and foam levels.

### Changing Settings During a Programme


- Press START/PAUSE  to pause
- Adjust settings as required
- Press START/PAUSE  again to resume

If the programme is changed, do not add additional detergent.

Use the Child Lock function to prevent accidental changes.

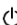
### Pausing and Opening the Door

Press START/PAUSE  to pause the programme.

If safe (low temperature and water level), the DOOR LOCK indicator  will turn off and the door can be opened.

Press START/PAUSE  again to continue.


### Cancelling a Programme

Turn the selector knob to the OFF position  to cancel.

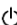
- If conditions allow, the door will unlock
- If water remains inside, select the Spin programme with spin disabled to drain water

Press START/PAUSE  to begin draining. The door will unlock once complete.

### End of Programme

- “End” will appear on the display
- Wait for the DOOR LOCK  indicator to turn off before opening

### Remove laundry, then:

- Turn the selector knob to OFF 
- Turn off the water supply
- Leave the door slightly open to allow the interior to dry.

### Care and Maintenance

Your appliance is designed for long-term use. Follow these instructions to maintain performance.

## Safety

**WARNING** – Risk of electric shock

Always disconnect from the mains before cleaning.

Never use a pressure washer.

## Water and Power Supply

- Turn off the water tap after each use
- Unplug the appliance before cleaning or maintenance

## Cleaning the Exterior

**WARNING** – Risk of explosion

Do not use flammable cleaning agents.

- Use warm soapy water or a mild detergent
- Wipe dry with a soft cloth
- Remove residues immediately
- Do not use high-pressure sprays

## Cleaning the Drum

Metal objects may cause rust spots.

- Do not use steel wool
- Use a chlorine-free cleaner and follow instructions

## Descaling

Descaling is not usually required if detergent is used correctly.

### If needed:

- Follow the descaler manufacturer's instructions
- Use small amounts only

**Note:** Descalers may damage components or discolour laundry.

## Door Care

Leave the door slightly open after use to prevent odours.

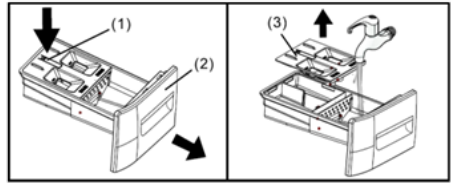
## Water Inlet Hose

Check at least once a year.

- Replace immediately if cracked or damaged
- Never reuse old hoses

## Cleaning the Detergent Drawer

If residue builds up:

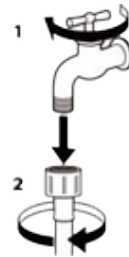


- Remove the drawer
- Clean under running water
- Refit securely

Do not operate the appliance without the drawer in place.

## Cleaning the Inlet Filters

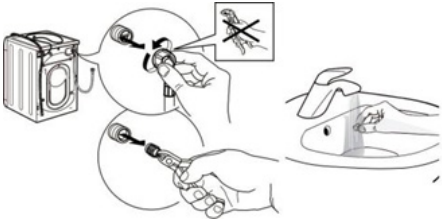
- Turn off water supply and unscrew the water inlet hose.



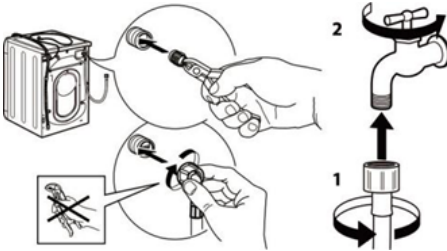
- Remove hose and clean mesh filter with a soft brush



- Unscrew the water inlet hose on the back of the appliance by hand. Pull out the mesh filter from the water inlet valve with pliers and carefully clean it.



- Insert the mesh filter again. Connect the water inlet hose to the water tap and the appliance. Do not use a tool to connect the inlet hose. Turn on the water tap and ensure all connections are tight.



### Cleaning the Drain Pump

**WARNING** – Risk of scalding

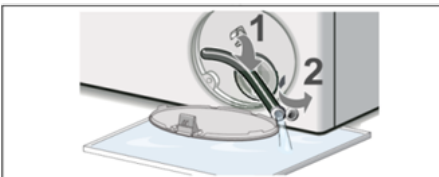
Hot water may be present.

If the appliance does not drain properly:

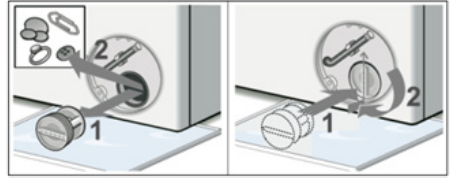
- Switch off and unplug
- Open the service cover



- Drain water using the hose into a suitable container
- Remove the pump cover and clear debris
- Ensure the impeller rotates freely



- Reassemble securely and make sure handle is vertical.






- Wipe away any spilled water and close the cover.



## Troubleshooting






Your appliance could occasionally fail to work. Before contacting the service centre, make sure that the problem cannot be solved easily using the following list.


Problem	Possible cause / solutions
There are color spots and oil stains in the drum	<ul style="list-style-type: none"> <li>● The appliance requires a service wash. Run a “<b>Drum Clean</b>” wash cycle with no detergent and no laundry.</li> </ul>
The machine smells	<ul style="list-style-type: none"> <li>● Due to the use of rubber parts, the machine will have rubber smell at the beginning of use, but the rubber smell will gradually disappear during use.</li> </ul>
The door cannot be opened	<ul style="list-style-type: none"> <li>● The safety protection function is in operation, and the water temperature and/or water level are/is too high.</li> <li>● Whether the program has ended normally and whether there is power failure.</li> <li>● Is the child lock function activated? Turn off the child lock function.</li> <li>● Whether to select the delay end function? Turn off the delay end function.</li> </ul>
The machine leaks from the dispenser	<ul style="list-style-type: none"> <li>● The dispenser drawer is blocked with detergent and requires cleaning.</li> <li>● The water pressure is too high and requires turning down – turn down the tap on the water supply pipe slightly and try again.</li> <li>● The appliance is tilting forwards – It must be level when in its final position.</li> </ul>
The machine leaks (other than dispenser)	<ul style="list-style-type: none"> <li>● The water inlet hose is loose, check both the cabinet and tap ends .</li> <li>● The inlet hose is tight but still leaks, if so replace the rubber washers, or the water inlet hose is missing the rubber washer.</li> <li>● The drain hose is not fixed in properly.</li> <li>● In case of water leakage inside the machine, please turn off the power supply and contact the after-sales department for maintenance</li> </ul>
The machine does not switch on	<ul style="list-style-type: none"> <li>● The appliance is not plugged into the socket fully, or not enough to make contact.</li> <li>● There is no power to the socket, or the fuse has blown in the mains plug.</li> </ul>
The wash cycle does not start	<ul style="list-style-type: none"> <li>● The door is not closed properly.</li> <li>● The <b>POWER</b>  button has not been pressed.</li> <li>● The <b>START/PAUSE</b>  button has not been pressed.</li> <li>● The water tap has not been turned on to allow water to flow into appliance.</li> <li>● A <b>Delay end</b> function has been set.</li> </ul>
The machine does not fill with water, the detergent cannot flow into the drum or “E02” appears in the display	<ul style="list-style-type: none"> <li>● The water inlet hose is kinked, twisted and bent.</li> <li>● The water inlet hose is not connected to the water supply.</li> <li>● The water pressure is too low.</li> <li>● The water tap has not been turned on to allow water to flow into the machine.</li> <li>● There is no water supply to the house.</li> <li>● The mesh filter in the water inlet hose and/or water inlet valve are/is blocked.</li> <li>● The faucet and/or water supply pipe are/is frozen.</li> <li>● The delay end function is selected so the machine won't allow water in</li> <li>● The <b>START/PAUSE</b>  button has not been pressed.</li> <li>● There is enough water in the drum already.</li> </ul>
Discharge the water when the program is started	<ul style="list-style-type: none"> <li>● This is not a fault. Please do not open the door to pour the water directly into the drum before the program runs, otherwise the machine may discharge the water which has been poured into the drum when the program is started,</li> </ul>

Problem	Possible cause / solutions
The water level is too low when the machine is washing	<ul style="list-style-type: none"> <li>● This is not a fault. The water consumption in a wash cycle of this appliance is relatively little, the water level in a wash cycle is lower than other washing machine.</li> </ul>
Replenishing water during wash cycle operation	<ul style="list-style-type: none"> <li>● If the water level drops, the machine will top up water automatically.</li> <li>● When the amount of washing clothes is too large, the appliance may top up water automatically several times during wash cycle operation.</li> </ul>
There is too much foam in drum or the foam overflow from detergent dispenser	<ul style="list-style-type: none"> <li>● The detergent is not suitable for machine washing (it should display the text “for washing machines” or “hand and machine wash” or similar).</li> <li>● Too much detergent was used – less detergent is required in soft water.</li> </ul>
The high-speed spinning cycle repeats many times	<ul style="list-style-type: none"> <li>● Due to the different types and materials of the laundry, the load balancing system of the appliance may wobble and disperse the clothes many times to prolong the spinning time. This is a normal phenomenon, not a machine failure.</li> </ul>
The machine does not spin	<ul style="list-style-type: none"> <li>● The Spin Speed is turned off by pressing the <b>SPEED</b> button to set all spinning value lights to go out on the display.</li> </ul>
The machine vibrates a lot during the spin cycle	<ul style="list-style-type: none"> <li>● The feet have not been adjusted, enabling the machine to rock.</li> <li>● New Installation – Either the Transit Bolts including the plastic spacer, or the Polystyrene Packaging have not been removed when installing the machine.</li> <li>● The appliance is trapped between cabinets and/or walls.</li> <li>● The load is slightly off balance</li> </ul>
The spin effect is not ideal.	<ul style="list-style-type: none"> <li>● When washing fewer clothes, such as a pair of jeans, a sweater, a bath towel, etc., the machine may not complete the spinning process due to balance protection.</li> <li>● If the load is in a slight out of balance condition and the appliance is spinning, but at a lower speed, not at the default spin speed of the cycle or the spin speed setting for the cycle.</li> </ul>
The machine does not drain , drains slowly or “E03” appears in the display	<ul style="list-style-type: none"> <li>● The top of the drain hose is too high – It must be fitted at a height between 65 and 100 cm from the floor.</li> <li>● The pump filter is blocked.</li> <li>● The drain hose is kinked, twisted or bent.</li> <li>● The drain hose is blocked or frozen.</li> </ul>
The program time stops counting down before entering high-speed spinning process	<ul style="list-style-type: none"> <li>● This is not a fault. The load balancing system of the appliance wobbling and dispersing the clothes in the drum for a long time to achieve balance and complete high-speed spinning; In the process of wobbling and dispersing, the program time stops counting down before the appliance enters the high-speed spinning process.</li> </ul>
The program takes too long	<ul style="list-style-type: none"> <li>● Program times will vary due to water pressure, the incoming water temperature and if the wash load goes out of balance. This will increase the program times accordingly (see “The high-speed spinning needs to be repeated many times” ).</li> </ul>
The machine is noisy	<ul style="list-style-type: none"> <li>● There will always be some motor, pump and drum noise during spin.</li> <li>● The washing machine touches other objects.</li> <li>● The foreign matters such as hairpins or metal objects fall in drum or tub.</li> </ul>

Problem	Possible cause / solutions
<p><b>The machine continuously fills with water and continually drains away</b></p>	<ul style="list-style-type: none"> <li>● The top of the drain hose is too low – It must be fitted at a height between 65 and 100 cm from the floor (see “Installation”).</li> <li>● The end of the drain hose has been pushed too far down the standpipe, the hose elbow should be fitted 4’ (100mm) from the end of the drain hose.</li> <li>● The end of the drain hose is submerged in the discharged water.</li> </ul>
<p><b>The discharged water flows back into the appliance</b></p>	<ul style="list-style-type: none"> <li>● If the end of the drain hose touches the discharged water (water drained from washer), it (the discharged water) can be sucked back into the appliance and may damage the appliance or textiles.</li> </ul>
<p><b>The local part of the control panel is heated</b></p>	<ul style="list-style-type: none"> <li>● This is the slight heating effect of the electronic components on the computer board on the back of the control panel.</li> </ul>
<p><b>After drying, there are water drops on the door and drum</b></p>	<ul style="list-style-type: none"> <li>● During drying, the door may be stained with water drops, please wipe off the water drops.</li> <li>● Did you put in too much or too thick clothes?</li> </ul>
<p><b>The drying effect is poor and uneven.</b></p>	<ul style="list-style-type: none"> <li>● Are clothes that are not easy to dry (such as thick cotton fabrics) and fabric that are easy to dry (such as synthetic fabrics) dried together?</li> <li>● Did you put in too many clothes for drying?</li> <li>● When only running the “Drying” program, do you separate the dehydrated and entangled clothes by putting them in drum?</li> <li>● Due to different types and quantities of clothes, uneven drying may occur, For uneven drying, please use a regular drying cycle.</li> <li>● Is the faucet turned off during drying?</li> <li>● Is the filter of the drain pump blocked during drying?</li> <li>● Is the drain hose bent, twisted or blocked during drying?</li> </ul>
<p><b>General</b></p>	<ul style="list-style-type: none"> <li>● Your appliance contains sensors that monitor progress during the wash cycle (eg: Water level, Temperature, Out of balance loads, Wash time/progress). Normally, if your appliance successfully completes the cycle, there is unlikely to be anything wrong.</li> </ul>

In case of the following faults, the fault state will be detected by the microcomputer system, with buzzer sounds issued and the corresponding fault codes displayed on the control panel:

Fault codes	Fault type	Possible cause / solutions
E02	No inlet water	<ul style="list-style-type: none"> <li>● Check whether the faucet is turned on? Whether the water supply is cut off? Whether mesh filter in the water inlet hose and the water inlet valve are blocked? and whether the water inlet hose of the appliance is frozen? Eliminate the above fault causes. If the fault code still exists, please contact the service center for repair.</li> </ul>
E03	Abnormal water drainage	<ul style="list-style-type: none"> <li>● Clean the pump filter.</li> <li>● Check whether the drain hose is bent, twisted or blocked? Eliminate the above fault causes. If the fault code still exists, please contact the service center for repair.</li> </ul>
U4	Door lock malfunction	<ul style="list-style-type: none"> <li>● The door is not closed in place, and the door lock does not work normally. Close the door again, turn the wash cycle selector knob to the "OFF" position  to turn off the power supply, and then turn the wash cycle selector knob to select any wash program and press the START/PAUSE  button to restart the program. Eliminate this fault causes. If the fault code still exists, please contact the service center for repair.</li> <li>● If the fault code displays and cannot open the door, door lock may have failed, please contact the service center for repair.</li> </ul>
H	The temperature in the drum is high	<ul style="list-style-type: none"> <li>● Press the START/PAUSE  button to pause the cycle and wait for several minutes. When the temperature in the drum drops to a safe range and the fault code on the display is removed, press the START/PAUSE  button to continue the rest of the program. If the fault code still remains, please contact the service center for repair.</li> </ul>
EXX	Other faults	<ul style="list-style-type: none"> <li>● Turn the wash cycle selector knob to the "OFF" position  to turn off the power supply, unplug the power cord, and contact the service center for repair as soon as possible.</li> </ul>

**Note:** Be sure to check the fault cause and eliminate the fault before pressing the START/PAUSE  button again. If the fault code is cleared, the appliance will continue to run. If the fault code still exists, unplug the power cord and contact the customer service centre as soon as possible.

Remember, you may be charged for a service call for problems caused by incorrect installation, as indicated on previous pages.

Not emptying contents from pockets may cause pump or drain hose blockages, or may damage the machine.

Do not wash items which do not have a wash label, or items that are not intended to be machine washable.

## Product Fiche

Entry method for new standard energy efficiency (EN60456:2016 + FprAA:2020)

Eco 40–60 (parameters are not adjusted by default)

Parameter	Value		Parameter	Value	
Rated capacity (kg)	Rated capacity (°)	6.0	Dimensions in cm (°),(°)	Height	85
	Rated washing capacity (°)	10.0		Width	60
				Depth	58
Energy Efficiency Index	EElw (°)	51.9	Energy efficiency class	EElw (°)	A
	EElwd (°)	66.9		EElwd (°)	D
Washing efficiency index	Iw (°)	1,031	Rinsing effectiveness (g/kg dry textile)	I <sub>r</sub> (°)	5,0
	J <sub>w</sub> (°)	1,031		J <sub>a</sub> (°)	5,0
Energy consumption in kWh per cycle, for the washing cycle of the household washer-dryer, using the eco 40-60 programme at a combination of full and partial loads. Actual energy consumption will depend on how the appliance is used	0.513		Energy consumption in kWh per cycle, for the wash and dry cycle of the household washer-dryer at a combination of full and half loads. Actual energy consumption will depend on how the appliance is used	3.074	
Water consumption in litre per cycle, for the eco 40-60 programme at a combination of full and partial loads. Actual water consumption will depend on how the appliance is used and on the hardness of the water.	51		Water consumption in litre per cycle, for the wash and dry cycle of the household washer-dryer at a combination of full and half loads. Actual water consumption will depend on how the appliance is used and on the hardness of the water.	89	
Maximum temperature inside the treated textile (°C) for the washing cycle of the household washer-dryer, using the eco 40-60 programme	Rated capacity	35	Maximum temperature inside the treated textile (°C) for the washing cycle of the household washer-dryer, using the wash and dry cycle.	Rated capacity	30
	Half	30		Half	22
	Quarter	22			
Spin speed (rpm)(°)	Rated washing	1400	Weighted remaining moisture content(%) (°)	62.9	
	Half	1400			
	Quarter	1400			
Eco 40-60 Programme duration (h:min)	Rated washing	3:59	Spin-drying efficiency class (°)	C	
	Half	3:00			
	Quarter	3:00			
Airborne acoustical noise emissions in the spinning phase for the eco 40-60 washing cycle at rated washing capacity(dB(A) re 1 pW)	76		Wash and dry cycle duration (h:min)	Rated capacity	7:30
				Half	5:30
Type	free-standing		Airborne acoustical noise emission class for the eco 40-60 programme at rated washing capacity	B	
Off-mode (W) (if applicable)	0,50		Standby mode (W) (if applicable)	-	
Delay start (W) (if applicable)	4,00		Networked standby (W) (if applicable)	-	
Minimum duration of the guarantee offered by the supplier (°),(°):					6months
This product has been designed to release silver ions during the washing cycle			NO		
Additional information(a),(d): Weblink to the supplier's website, where the information in point 9 of Annex II to Regulation (EU) 2019/2023 (1)(b) is found: (°) this item shall not be considered relevant for the purposes of Article 2(6) of Regulation (EU)2017/1369. (°) for the eco 40-60 programme. (°) for the wash and dry cycle. (°)changes to this item shall not be considered relevant for the purposes of paragraph 4 of Article 4 of Regulation (EU) 2017/1369. (°) if the product database automatically generates the definitive content of this cell, the supplier shall not enter these data.					

Entry method for new standard energy efficiency (EN60456:2016 + FprAA:2020)  
Eco 40-60, (Parameters are not adjusted by default)

10kg BLDC	20 °C	Cotton	Wool	Quick wash
Rated capacity / kg	2	10	1	1
Program duration ( h:min )	0:39	0:57	0:50	0:15
Energy consumption ( Kwh/cycle )	0.26	1.27	0.22	0.11
Water consumption ( L/cycle )	60	75	65	45
Max temperature / °C	30	55	35	35
RMC	75%	70%	85%	75%
Spinning speed / rpm	700	900	500	700

- The Eco 40–60 program is able to clean normally soiled cotton laundry declared to be washable at 40°C or 60°C, together in the same cycle. This program is used to assess compliance with EU eco-design legislation.
- The most efficient programs in terms of energy consumption are generally those that operate at lower temperatures and longer durations.
- Noise and remaining moisture content are influenced by the spinning speed: the higher the spinning speed during the spin phase, the higher the noise and the lower the remaining moisture content.
- The values given for programs other than the Eco 40–60 program and the wash and dry cycle are indicative only.

PARAMETER	UNIT	VALUE
Rated capacity for the washing cycle, at 0,5 kg intervals (c)	kg	10,0
Rated capacity for the wash and dry cycle, at 0,5 kg intervals (c)	kg	6,0
Energy consumption of the eco 40-60 programme at rated capacity (E <sub>w,full</sub> )	kWh/cycle	0.920
Energy consumption of the eco 40-60 programme at half rated capacity (E <sub>w,1/2</sub> )	kWh/cycle	0.580
Energy consumption of the eco 40-60 programme at quarter rated capacity (E <sub>w,1/4</sub> )	kWh/cycle	0.203
Weighted energy consumption of the eco 40-60 programme (E <sub>w</sub> )	kWh/cycle	0.513
Standard energy consumption of the eco 40-60 programme (SCE <sub>w</sub> )	kWh/cycle	0,988
Energy Efficiency Index of the washing cycle (EEL <sub>w</sub> )	—	51.9
Energy consumption of the wash and dry cycle at rated capacity (E <sub>WD,full</sub> )	kWh/cycle	3.661
Energy consumption of the wash and dry cycle at half rated capacity (E <sub>WD,1/2</sub> )	kWh/cycle	2.193
Weighted energy consumption of the wash and dry cycle (E <sub>wD</sub> )	kWh/cycle	3.074
Standard energy consumption of the wash and dry cycle (SCE <sub>wD</sub> )	kWh/cycle	4.594
Energy Efficiency Index of the wash and dry cycle (EEL <sub>wD</sub> )	—	66.9
Water consumption of the eco 40-60 programme at rated capacity (W <sub>w,full</sub> )	L/cycle	74.0
Water consumption of the eco 40-60 programme at half rated capacity (W <sub>w,1/2</sub> )	L/cycle	49.0
Water consumption of the eco 40-60 programme at quarter rated capacity (W <sub>w,1/4</sub> )	L/cycle	36.0
Weighted water consumption of the washing cycle (W <sub>w</sub> )	L/cycle	51
Water consumption of the wash and dry cycle at rated capacity (W <sub>WD,full</sub> )	L/cycle	100.0
Water consumption of the wash and dry cycle at half rated capacity (W <sub>WD,1/2</sub> )	L/cycle	72.0
Weighted water consumption the wash and dry cycle (W <sub>wD</sub> )	L/cycle	89
Washing efficiency index of the eco 40-60 programme at rated capacity (I <sub>w</sub> )	—	1,031
Washing efficiency index of the eco 40-60 programme at half rated capacity (I <sub>w</sub> )	—	1,031
Washing efficiency index of the eco 40-60 programme at quarter rated capacity (I <sub>w</sub> )	—	1,031
Washing efficiency index of the wash and dry cycle at rated capacity (I <sub>wD</sub> )	—	1,031
Washing efficiency index of the wash and dry cycle at half rated capacity (I <sub>wD</sub> )	—	1,031
Rinsing effectiveness of the eco 40-60 programme at rated capacity (I <sub>r</sub> )	g/kg	5,0
Rinsing effectiveness of the eco 40-60 programme at half rated capacity (I <sub>r</sub> )	g/kg	5,0
Rinsing effectiveness of the eco 40-60 programme at quarter rated capacity (I <sub>r</sub> )	g/kg	5,0
Rinsing effectiveness of the wash and dry cycle at rated capacity (I <sub>rD</sub> )	g/kg	5,0
Rinsing effectiveness of the wash and dry cycle at half rated capacity (I <sub>rD</sub> )	g/kg	5,0
Programme duration of the eco 40-60 programme at rated capacity (t <sub>w</sub> )	h:min	3:59
Programme duration of the eco 40-60 programme at half rated capacity (t <sub>w</sub> )	h:min	3:00
Programme duration of the eco 40-60 programme at quarter rated capacity (t <sub>w</sub> )	h:min	3:00
Programme duration of the wash and dry cycle at rated capacity (t <sub>wD</sub> )	h:min	7:30
Programme duration of the wash and dry cycle at half rated capacity (t <sub>wD</sub> )	h:min	5:30
Temperature reached for minimum 5 min inside the load during the eco 40-60 programme at rated capacity (T)	°C	35
Temperature reached for minimum 5 min inside the load during the eco 40-60 programme at half rated capacity (T)	°C	30
Temperature reached for minimum 5 min inside the load during the eco 40-60 programme at quarter rated capacity (T)	°C	22
Temperature reached for minimum 5 min inside the load in the washing cycle during wash and dry cycle at rated capacity (T)	°C	30
Temperature reached for minimum 5 min inside the load in the washing cycle during wash and dry cycle at half rated capacity (T)	°C	22
Spin speed in the spinning phase of the eco 40-60 programme at rated capacity (S)	rpm	1400
Spin speed in the spinning phase of the eco 40-60 programme at half rated capacity (S)	rpm	1400
Spin speed in the spinning phase of the eco 40-60 programme at quarter rated capacity (S)	rpm	1400
Weighted remaining moisture content after washing (D)	%	62.9
Final moisture content after drying	%	3.0
Airborne acoustical noise emissions during eco 40-60 programme (spinning phase)	dB(A) re 1 P <sub>w</sub>	76
Power consumption in 'off mode' (P <sub>o</sub> ) (if applicable)	W	0,50
Power consumption in 'standby mode' (P <sub>sm</sub> ) (if applicable)	W	—
Does 'standby mode' include the display of information?	—	No
Power consumption in 'standby mode' (P <sub>sm</sub> ) in condition of networked standby (if applicable)	W	—
Power consumption in 'delay start' (P <sub>ds</sub> ) (if applicable)	W	4,00

# Here For You

---

## Here For You

### After-sales assistance

If you continue to experience problems with your appliance, please call the Montpellier customer service helpline on: 03333 234473 opt 3

Please have all your product details available, including the model number, serial number, original sales invoice (clearly showing model number, date of purchase and your retailer's details) before registering a fault.

The service call cannot progress without this information.

### Your 2 year Manufacturer's guarantee

THIS DOES NOT AFFECT YOUR STATUTORY RIGHTS.

Your new Montpellier appliance carries a free guarantee which protects you against the cost of repairs during the first 24 months from date of purchase provided that:

Any claim is accompanied by evidence of the model reference, model serial number and proof of purchase, such as a Sales Receipt, showing that the appliance was purchased within the 24 months prior to the date of claim.

### What is not covered under the Guarantee

- Any appliance not correctly installed and operated in accordance with the manufacturer's instructions
- Any appliance that is used for anything other than domestic purposes.
- Any defect caused by accident, misuse, unauthorised modification or inexpert repair.
- Cost of Call-out where a fault cannot be found with the appliance. Cost of Call-out for work covering routine maintenance, such as, but not exclusively, cleaning of filters or defrosting.

- Cost of Call-out for work required to correct the alignment of doors following door reversal procedures carried out by you. Use of the appliance by anyone other than the Householder. Use in any commercial environment.
- Consumable items, such as, but not exclusively, fuses in plugs, bulbs and breakable items which require routine replacement. Repair costs incurred that have not been authorised by Montpellier service and/or carried out by a non-approved Montpellier engineer.
- Montpellier Appliances do not accept claims for consequential loss, rusting, corroding, delivery damage or scratches.

YOUR GUARANTEE IS VALID ONLY IN THE UK & THE REPUBLIC OF IRELAND

To register your appliance simply complete the card in your appliance pack and return it with a stamp affixed or alternatively you can register online at:

[montpellier-appliances.com/support](http://montpellier-appliances.com/support)

...or by phone, call our warranty registration department on **08081 961 388**

### SERVICE HELP -LINE

Should your appliance develop a fault, please call the Montpellier customer service helpline on:

**03333 234473 opt 3**

Please remember to have all your product details available, including the model number, serial number, date of purchase and your retailer's details before registering a fault.







**Montpellier Domestic Appliances Ltd.**

Unit 1, Tewkesbury Retail Park, Northway Lane,  
Tewkesbury, Gloucestershire GL20 8UY

**[www.montpellier-appliances.com](http://www.montpellier-appliances.com)**



The symbol on the product or on its packaging indicates that this product may not be treated as household waste. Instead it shall be handed over to the applicable collection point for the recycling of electrical and electronic equipment. By ensuring this product is disposed of correctly, you will help prevent potential negative consequences for the environment and human health, which could otherwise be caused by inappropriate waste handling of this product. For more detailed information about recycling of this product, please contact your local city office, your household waste disposal service or the shop where you purchased the product.