

Montpellier

DOMESTIC APPLIANCES

LAUNDRY DISHWASHING COOKING COOLING

Installation & Operating Instructions



No Frost Fridge Freezer in White
MDANF181W

Please read these instructions carefully before attempting to install or use this appliance.
We recommend that you keep these instructions in a safe place for future reference.

Welcome

Thank you for choosing this Montpellier appliance.

Your appliance has been designed to provide you with the best combination of style, reliability and performance, to give you years of trouble-free use.

You may be familiar with a similar product, but please take the time to read these instructions carefully before installing or using your appliance to ensure that you get the most from your purchase and keep the manual for future reference.

The design and specifications are subject to change without prior notice for product development.

Your appliance is covered by a comprehensive two year Parts & Labour Guarantee. In the unlikely event that you experience a problem with your appliance, you can rest assured that you are fully protected against the cost of repairs for the first 24 months. Please note that any claim must be accompanied by the model reference number, serial number and proof of purchase.

To activate your guarantee, you will need your product serial number. This can be found inside your appliance.

NB: Please make sure that you keep a copy of your original sales invoice as this will be needed if any service call is required.

There are three ways to register your Guarantee:

Online: Visit the Support page on our website and complete the online Product Registration form.

www.montpellier-appliances.com

By Post: Simply detach and fill in the form provided, attach a stamp and send it in the post. Don't forget to include your e-mail address so that we can send confirmation through to you.

By Phone: Contact our warranty registration department on **08081 961 388**





Montpellier

montpellier-appliances.com

2 YEAR GUARANTEE

PARTS & LABOUR

ACROSS ALL OUR MODELS

Icon	Type	Meaning
	Warning	May Cause Serious Injury
	Risk of Electric Shock	Dangerous Voltage Risk
	Fire	Warning, Risk of Fire/Flammable Materials
	Caution	Risk of Damage/ Important Information

Contents

Safety Information	4
Care & Cleaning	6
Product Overview	9
Installation	10
Control Panel	15
First Use	17
Cleaning	19
Troubleshooting	20
Product Specification	22
After-sales assistance	23

DEAR CUSTOMER:

Thank you for buying this product. To ensure that you get the best results from this appliance, please take time to read through the simple instructions in this booklet. Please ensure that the packing material is disposed of in accordance with the current environmental requirements. When disposing of any old appliances please contact your local waste disposal department for advice on safe disposal. This appliance must only be used for its intended purpose.



Safety Information:

For your safety and to ensure correct use of the appliance, please read this user manual carefully before installation and first use, paying particular attention to the hints and warnings provided.

To avoid unnecessary mistakes or accidents, ensure that all persons using the appliance are fully familiar with its operation and safety features.

Keep these instructions with the appliance at all times. If the appliance is moved or sold, ensure that this manual is passed on to the new user so that they are properly informed about the appliance's operation and safety requirements throughout its service life.

For the protection of life and property, always follow the precautions outlined in this manual. The manufacturer cannot be held responsible for damage or injury resulting from failure to comply with these instructions.

Safety of Children & Vulnerable Persons:

- This appliance may be used by children aged 8 years and above, and by persons with reduced physical, sensory, or mental capabilities, or lack of experience and knowledge, provided they are supervised or have been instructed on how to use the appliance safely and understand the hazards involved.
- Children aged 3 to 8 years are permitted to load and unload this appliance.
- Children should be supervised at all times to ensure they do not play with the appliance.
- Cleaning and user maintenance must not be carried out by children unless they are aged 8 years or above and are supervised.
- Keep all packaging materials well out of the reach of children, as there is a risk of suffocation.
- When discarding the appliance, disconnect it from the mains supply, cut the power cable as close to the appliance as possible, and remove the door to prevent children from suffering electric shock or becoming trapped inside.
- If this appliance, which features magnetic door seals, is replacing an older appliance fitted with a spring lock or latch, ensure that the old locking mechanism is rendered unusable before disposal to prevent it from becoming a hazard to children.

General Safety:



Keep ventilation openings in the appliance enclosure or built-in structure clear of obstruction.



Do not use mechanical devices or other means to accelerate the defrosting process, other than those recommended by the manufacturer.



Do not damage the refrigerant circuit.



Do not use electrical appliances (such as ice cream makers) inside the refrigeration appliance unless they are specifically approved for this purpose by the manufacturer.



Do not touch the light bulb if it has been on for a long period, as it may be very hot. (*if the product has a light)



When positioning the appliance, ensure that the power supply cord is not trapped or damaged.



Do not place multiple portable socket outlets or portable power supplies at the rear of the appliance.

- Do not store explosive substances, such as aerosol cans with flammable propellants, inside this appliance.
- This appliance contains the refrigerant isobutane (R600a) within the refrigerant circuit. Isobutane is a natural gas with low environmental impact; however, it is flammable.
- During transportation and installation, ensure that no components of the refrigerant circuit are damaged.
- Avoid open flames and sources of ignition.
- Ensure the room in which the appliance is installed is well ventilated.
- It is dangerous to alter the specifications or modify this appliance in any way.
- Damage to the power cord may result in a short circuit, fire, and/or electric shock.
- This appliance is intended for household and similar applications only, including:
 - Staff kitchen areas in shops, offices, and other working environments
 - Farmhouses
 - Use by clients in hotels, motels, and other residential-type environments
 - Bed and breakfast establishments
 - Catering and similar non-retail applications



Any electrical components (plug, power cord, compressor and etc.) must be replaced by a certified service agent or qualified service personnel.



The light bulb supplied with this appliance is a "special use lamp bulb" usable only with the appliance supplied. This "special use lamp" is not usable for domestic lighting. (*if the product has a light)

- The power cord must not be extended or lengthened.
- Ensure that the power plug is not crushed or damaged by the rear of the appliance. A damaged plug may overheat and present a fire risk.
- Ensure the mains plug remains accessible at all times.
- Do not pull the appliance by the mains cable.
- If the wall socket is loose or damaged, do not insert the plug, as this may cause electric shock or fire.
- Do not operate the appliance without the internal lamp fitted.
- This appliance is heavy; take care when moving it.
- Do not remove or touch items from the freezer compartment with wet or damp hands, as this may cause skin abrasions or frost burns.
- Avoid prolonged exposure of the appliance to direct sunlight.

Daily Use:

- Do not place hot items directly onto plastic components inside the appliance.

- Do not place food items directly against the rear wall of the appliance.
- Frozen food must not be refrozen once it has been completely thawed. (*if the product has a freezer compartment)
- Store pre-packed frozen food in accordance with the food manufacturer's instructions. (*if the product has a freezer compartment)
- Always follow the appliance manufacturer's recommended storage guidelines.
- Do not place carbonated or fizzy drinks in the freezer compartment, as pressure may build up and cause containers to burst. (*if the product has a freezer compartment)
- Ice lollies can cause frost burns if consumed directly from the freezer. (*if the product has a freezer compartment)
- To avoid food contamination, observe the following hygiene guidelines:
- Avoid leaving the door open for long periods, as this can cause a significant rise in internal temperature.
- Clean all surfaces that come into contact with food regularly, including accessible drainage systems.
- Clean water tanks if they have not been used for 48 hours.
- Flush any water system connected to a mains supply if water has not been drawn for 5 days.
- Store raw meat and fish in sealed containers to prevent contact with or dripping onto other foods.
- Two-star freezer compartments (if fitted) are suitable for storing pre-frozen food, storing or making ice cream, and making ice cubes.
- One-, two-, and three-star compartments (if fitted) are not suitable for freezing fresh food.
- If the appliance is left unused for an extended period, switch it off, defrost, clean, dry thoroughly, and leave the door open to prevent mould from developing.

Care & Cleaning:

- Before carrying out any maintenance or cleaning, switch off the appliance and disconnect it from the mains supply.
- Do not clean the appliance using metal objects, as this may cause damage or injury.
- Do not use sharp objects to remove frost, as this may damage the appliance. Use a plastic scraper only.
- Regularly inspect the drain outlet in the refrigerator compartment for defrosted water. If necessary, clean the drain to prevent blockages.
- A blocked drain may cause water to collect at the bottom of the appliance. (*if there is a fresh food storage compartment)

Installation:

IMPORTANT! For the electrical connection, carefully follow the instructions provided in the relevant sections of this manual.

- Unpack the appliance and inspect it for any damage. Do not connect or use the appliance if it is damaged. Report any damage immediately to the retailer and retain the packaging for reference.

- Allow the appliance to stand upright for at least four hours before connecting it to the mains supply to let the compressor oil settle.
- Ensure there is adequate air circulation around the appliance. Insufficient ventilation may cause overheating. Follow the installation instructions to achieve proper airflow.
- Whenever possible, position the spacers against a wall to prevent contact with hot components, such as the compressor or condenser, and reduce the risk of burns.
- Do not place the appliance near radiators, cookers, or other heat sources.
- Ensure that the mains plug remains accessible after installation for safe disconnection.


Service:

- Any electrical work required for servicing the appliance must be carried out by a qualified electrician or competent person.
- This appliance must be serviced by an authorized service centre, using only genuine spare parts.

Energy Saving:

- Do not place hot food directly into the appliance.
- Avoid packing food too closely together, as this prevents proper air circulation.
- Ensure that food does not touch the back wall of the compartment(s).
- In the event of a power outage, do not open the door(s).
- Minimise the frequency of opening the door(s) during use.
- Do not leave the door(s) open for extended periods.
- Do not set the thermostat to colder than necessary.
- Keep all accessories, such as drawers, shelves, and balconies, in place to maintain energy efficiency.

Environment Protection:

- This appliance does not contain gases that could harm the Ozone layer, either in its refrigerant circuit or insulation materials.
- Do not dispose of the appliance with regular household waste.
- The insulation foam contains flammable gases, so the appliance must be disposed of in accordance with local regulations. Contact your local authorities for guidance.
- Avoid damaging the cooling unit, particularly the heat exchanger, during handling or disposal.
- Materials marked with the recycling symbol  are recyclable and should be processed at the appropriate collection points.



The symbol on the product or its packaging indicates that this appliance must not be disposed of with household waste.

Instead, it should be taken to an authorized collection point for the recycling of electrical and electronic equipment.

Proper disposal helps prevent potential harm to the environment and human health that could result from inappropriate waste handling.

For more information about recycling this product, contact your local council, household waste disposal service, or the retailer where the product was purchased.

Packaging Materials

The materials with the symbol are recyclable.

Dispose of all packaging in an appropriate recycling container to ensure proper recycling.

Disposal of Appliance

1. Disconnect the mains plug from the power outlet.
2. Cut the mains cable and dispose of it safely.

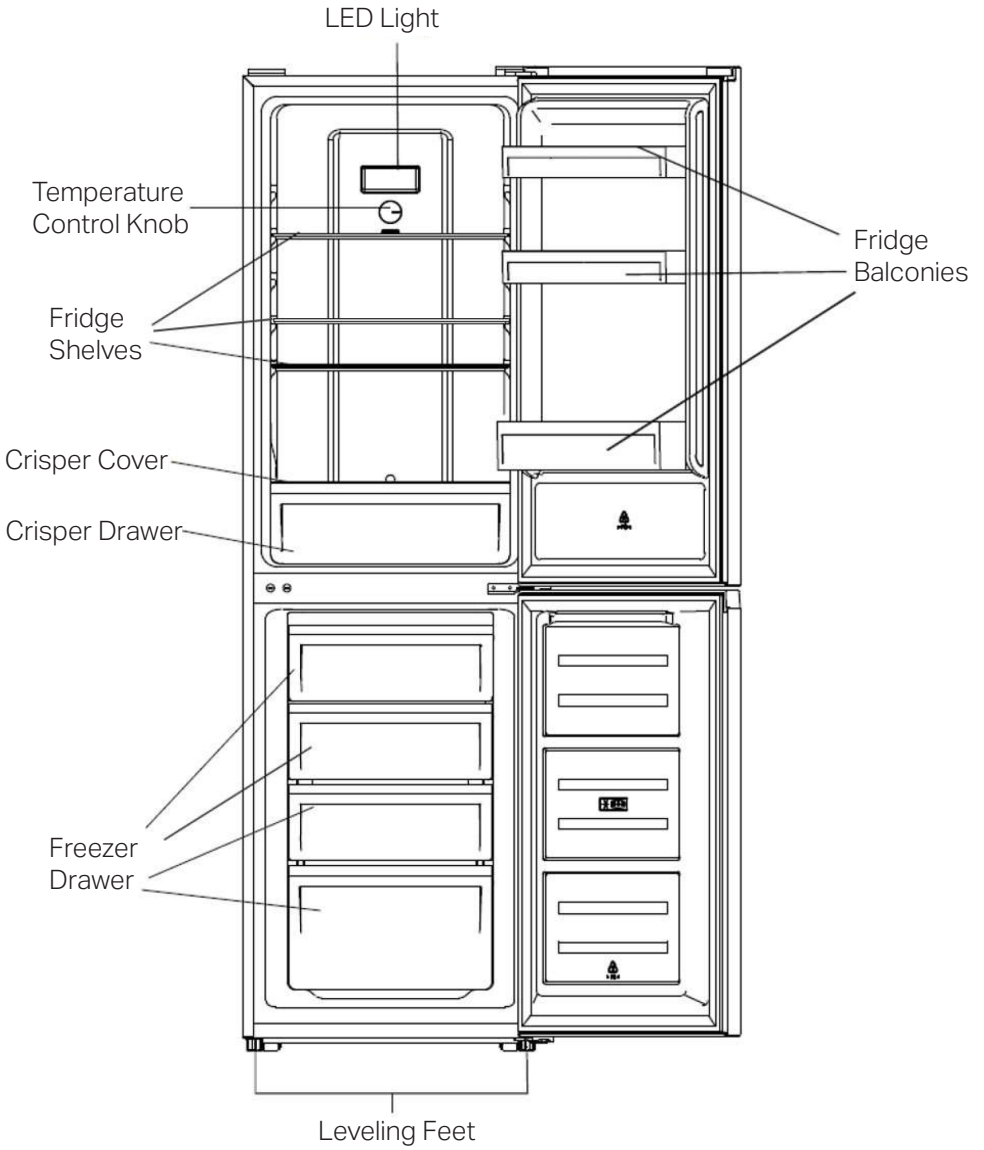


WARNING:

During the use, servicing, and disposal of the appliance, pay attention to the symbol shown (located on the rear of the appliance, either on the rear panel or compressor, in yellow or orange).

This is a risk of fire warning symbol. The refrigerant pipes and compressor contain flammable materials. Always keep the appliance away from open flames or other sources of ignition during use, servicing, and disposal.

Product Overview:

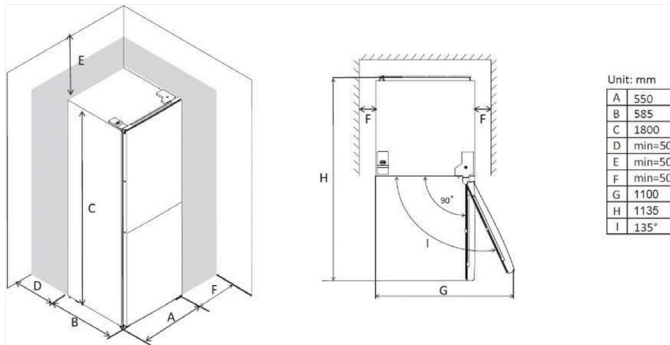


Note: This illustration is provided for guidance purposes only. For full installation details, please refer to your specific appliance instructions.

Installation:

Space Requirements:

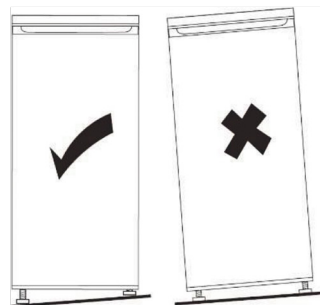
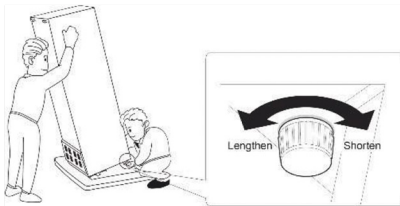
- Choose a location away from direct sunlight.
- Ensure there is enough space for the refrigerator doors to open fully.
- Place the appliance on a level or nearly level floor.
- Allow sufficient space to install the refrigerator on a flat, stable surface.
- Maintain clearance on the right, left, back, and top to improve air circulation, reduce power consumption, and lower energy costs.
- Keep at least a 50 mm gap on both sides and at the back of the appliance.



Levelling the Unit:

To level the appliance, adjust the two levelling feet at the front of the unit.

If the appliance is not level, the doors and magnetic seals may not align properly, affecting the seal and performance.



Positioning:

Install the appliance in a location where the ambient temperature matches the climate class indicated on the rating plate:

- Extended Temperate (SN): Suitable for ambient temperatures from 10°C to 32°C.
- Temperate (N): Suitable for ambient temperatures from 16°C to 32°C.
- Subtropical (ST): Suitable for ambient temperatures from 16°C to 38°C.
- Tropical (T): Suitable for ambient temperatures from 16°C to 43°C.

Location:

- Position the appliance well away from heat sources such as radiators, boilers, and direct sunlight.
- Ensure there is adequate airflow around the back of the cabinet to allow proper ventilation.
- For optimal performance, if the appliance is placed below an overhanging wall unit, maintain a minimum clearance of 50 mm between the top of the cabinet and the wall unit. Ideally, the appliance should not be installed under overhanging wall units.
- The appliance can be levelled accurately using one or more adjustable feet located at the base of the cabinet.
- This refrigerating appliance is not designed for built-in installation.



WARNING: The appliance must be easily disconnected from the mains power supply; therefore, the plug should remain accessible after installation.

Electrical Connection:

Before plugging in the appliance, ensure that the voltage and frequency indicated on the rating plate match your domestic power supply.

The appliance must be earthed. The power supply cable plug is equipped with an earth contact for this purpose. If your domestic power socket is not earthed, the appliance must be connected to a separate earth in accordance with current regulations. This should be carried out by a qualified electrician.

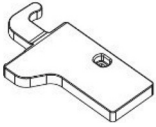
The manufacturer accepts no responsibility for damage or injury caused by failure to follow these safety precautions.

This appliance complies with E.E.C. Directives.

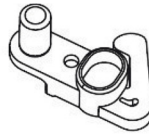
Door Reversibility:

Before reversing the door, ensure you have the following tools and materials ready:

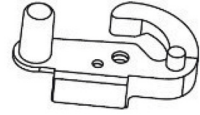
- Straight (flathead) screwdriver
- Cross (Phillips) screwdriver
- Spanner
- All components included in the accessory bag



Left Door Hinge Cover x 1



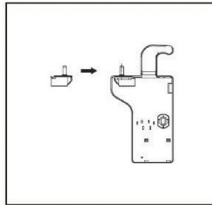
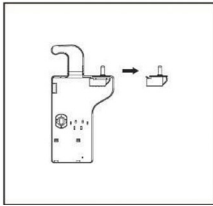
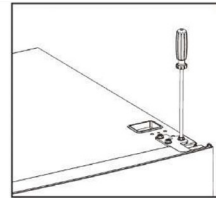
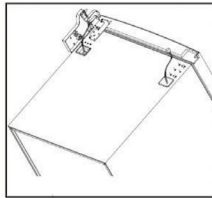
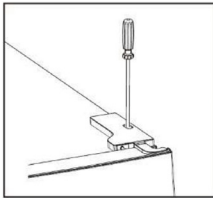
Left Aid-Closer on Upper Door x 1



Left Aid-Closer on Lower Door x 1

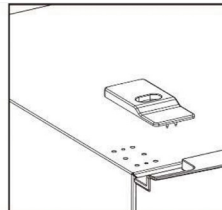
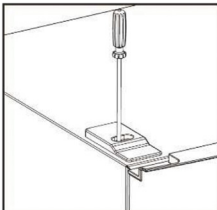
1. Remove the top hinge:

- Unscrew the top hinge cover, then remove the top hinge.
- Lift the upper door and place it on a soft pad to prevent scratches or damage.



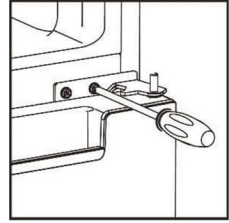
2. Remove screw covers:

- Take off the top left screw cover.



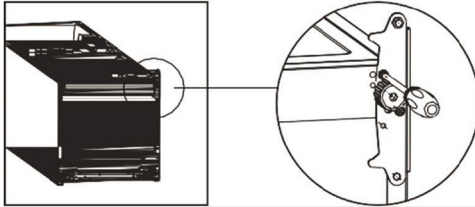
3. Remove doors:

- Remove the upper door.
- Using a cross screwdriver, remove the screw from the middle hinge and then take off the lower door.



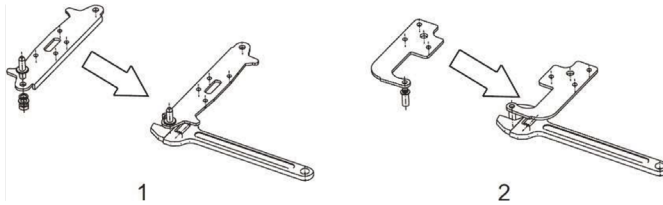
4. Prepare the lower hinge:

- Lay the refrigerator down.
- Remove the adjustable feet.
- Unscrew and remove the lower hinge using a cross screwdriver.



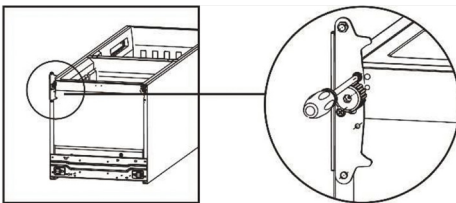
5. Adjust hinge cores:

- Rotate the hinge cores of the lower and upper hinges to the opposite positions.



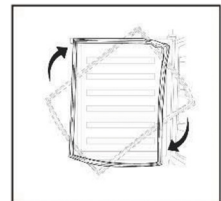
6. Install the lower hinge:

- Position the lower hinge under the refrigerator.
- Reinstall the adjustable feet and ensure the appliance is level.



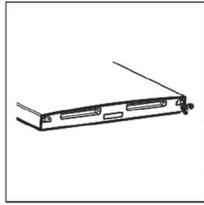
7. Swap door gaskets:

- Detach the fridge and freezer door gaskets.
- Reattach them after rotating to match the reversed door positions.



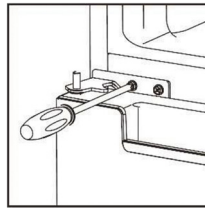
8. Install new aid-closers:

- Remove the original aid-closers from the upper and lower doors.
- Install the new aid-closers from the accessory bag following the included instructions.



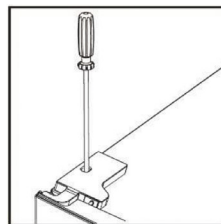
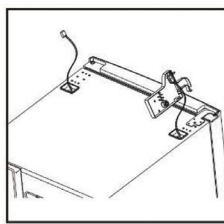
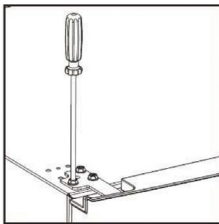
9. Reinstall the lower door:

- Place the lower door back on the cabinet.
- Adjust and fix the middle hinge in position.



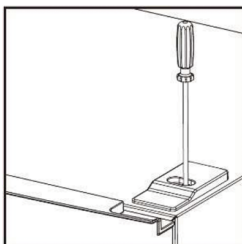
10. Reinstall the upper door:

- Place the upper door back onto the cabinet.
- Ensure the door is aligned horizontally and vertically so all seals are properly closed.
- Attach the top hinge, tighten screws, and then fix the top hinge cover from the accessory bag.



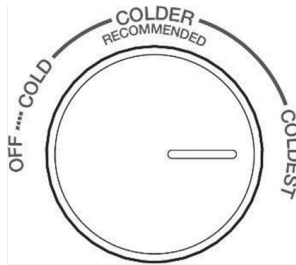
11. Final step:

- Replace any remaining screw covers.



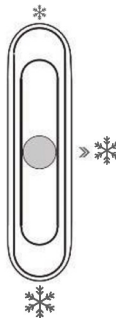
User Control Panel:

Fridge Compartment Temperature Setting



1. The temperature knob inside the fridge compartment is used to adjust the internal temperature.
2. The fridge temperature is controlled by an internal sensor with four settings:
 - **OFF** – Appliance is turned off; fridge and freezer will not operate.
 - **COLD** – Warmest setting.
 - **COLDER** – Medium cooling.
 - **COLDEST** – Coldest setting for maximum cooling.
3. The appliance may not maintain the desired temperature if the room is very hot or if the door is opened frequently.
4. When the knob is set to OFF, both the fridge and freezer compartments will not operate.

Freezer Compartment Temperature Setting



1. The slider inside the fridge compartment is used to adjust the freezer compartment temperature.
2. Adjusting the slider:
 - Moving the slider toward (❄️❄️❄️), increases the temperature (warmer) in the freezer compartment.
 - Moving the slider toward (*) decreases the temperature (colder) in the freezer compartment.
3. The middle position (❄️❄️❄️) is recommended for normal, everyday use.

4. For the lowest freezer temperature, set the fridge temperature knob to COLDEST and move the slider to (*).

Temperature Setting Recommendations

Temperature Setting Recommendation		
Environment Temperature	Freezer Temperature	Fridge Temperature
Summer (Above 38°C)		Set on * Set on colder~coldest
Normal		Set on * Set on colder
Winter (Below 16°C)		Set on * Set on colder~coldest

1. The information above provides recommended temperature settings for normal use.
2. In winter or when ambient temperatures fall below 16°C, avoid setting the freezer slider to (*~) or COLD.
3. For energy efficiency, the (*~) and COLDEST settings should only be used for special purposes (e.g., quick-freezing or ice making) and should be reset to normal settings afterward.

First Use

Cleaning the Interior

Before using the appliance for the first time:

1. Wash the interior and all internal accessories with lukewarm water and a small amount of neutral soap to remove any odours from manufacturing.
2. Rinse thoroughly and dry all surfaces completely.

Important: Do not use detergents, abrasive powders, or harsh cleaning agents, as these may damage the finish of the appliance.

Daily Use

Store different types of food in the appropriate compartments according to the table below.

Refrigeration Compartment	Type of food
Door or balconies of fridge compartment	<ul style="list-style-type: none">• Foods with natural preservations, such as jams, juices, drinks, condiments• Do not store perishable foods
Crisper drawer (salad drawer)	<ul style="list-style-type: none">• Fruits, herbs and vegetables should be placed separately in the crisper bin• Do not store bananas, onions, potatoes, garlic in the refrigerator
Fridge shelf - middle	<ul style="list-style-type: none">• Dairy products, eggs
Fridge shelf - top	<ul style="list-style-type: none">• Foods hat do not need cooking, such as read-to-eat foods, deli meats, leftovers
Freezer drawer(s)/shelf	<ul style="list-style-type: none">• Foods for long-term storage• Bottom drawer/shelf for raw meat, poultry, fish• Middle drawer/shelf for frozen vegetables, chips• Top drawer/shelf for ice cream, frozen fruit, frozen baked goods

Thawing

Deep-frozen or frozen food can be thawed in the fridge compartment or at room temperature, depending on the time available.

Small portions may also be cooked directly from frozen. In this case, allow for longer cooking times.

Ice Cubes

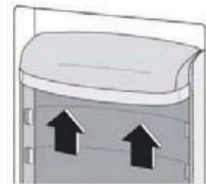
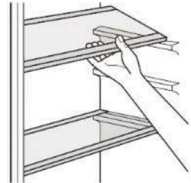
This appliance may come with one or more ice-cube trays for making ice.

Accessories – Moveable Shelves

The walls of the refrigerator feature a series of runners, allowing the shelves to be adjusted and positioned as desired.

Positioning the Door Balconies

To accommodate food packages of various sizes, the door balconies can be positioned at different heights.

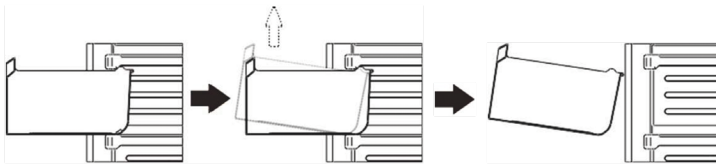


To adjust:

1. Gradually pull the balcony in the direction of the arrow until it releases.
2. Reposition the balcony at the desired height and ensure it is securely in place.

Removing the Bottom Drawer

1. Pull the bottom drawer out until it reaches the stopper position.
2. Lift the front of the drawer slightly.
3. Pull the drawer completely out of the compartment.

**Helpful Hints & Tips:****Freezing Tips**

To ensure optimal results when freezing food, please follow these recommendations:

- The maximum quantity of food that can be frozen in 24 hours is indicated on the appliance rating plate.
- The freezing process takes 24 hours; do not add additional food for freezing during this period.
- Only freeze top-quality, fresh, and thoroughly cleaned food.
- Prepare food in small portions to allow rapid and complete freezing and to enable thawing only the amount required.
- Wrap food in aluminum foil or polythene, ensuring the packages are airtight.
- Avoid contact between fresh, unfrozen food and food that is already frozen to prevent a rise in temperature of the frozen items.
- Lean foods store better and longer than fatty foods; note that salt reduces the storage life of food.
- Water ices can cause frostbite if consumed immediately after removal from the freezer.
- It is advisable to label each package with the freezing date to keep track of storage times.

Frozen Food Storage

To ensure the best performance and maintain food quality:

- Ensure that commercially frozen food has been properly stored by the retailer.
- Transfer frozen food to your freezer in the shortest possible time.
- Minimize door openings and avoid leaving the door open longer than necessary.
- Do not refreeze food that has already thawed, as it deteriorates rapidly.
- Adhere to the storage period indicated by the food manufacturer.

Fresh Food Storage

To achieve the best performance and maintain food quality:

- Do not store warm food or liquids that may evaporate directly in the refrigerator.
- Cover or wrap all food, especially items with strong odors.
- **Raw meats (all types):** Wrap in polythene bags and place on the glass shelves above the vegetable drawer. For safety, store in this way for no more than 1–2 days.
- **Cooked foods and cold dishes:** These should be covered and may be stored on any shelf.
- **Fruits and vegetables:** Clean thoroughly and store in the designated vegetable drawers.
- **Butter and Cheese:** Store in airtight containers or wrap in aluminium foil or polythene bags to minimize air exposure.
- **Milk bottles:** Ensure they are capped and store them in the door balconies.
- **Bananas, Potatoes, Onions, and Garlic:** If unpackaged, these should not be stored in the refrigerator.

Cleaning

For hygienic purposes, the interior of the appliance, including all internal accessories, should be cleaned regularly.



Warning: The appliance must not be connected to the mains during cleaning due to the risk of electrical shock.

- Before cleaning, switch off the appliance and disconnect the plug from the mains, or turn off the circuit breaker or fuse.
- Never use a steam cleaner, as moisture may penetrate electrical components, creating a risk of electrical shock.
- Hot vapours can also damage plastic parts.
- Ensure the appliance is completely dry before reconnecting it to the mains and returning it to service.

Important! Ethereal oils and organic solvents can damage plastic parts of the appliance. Examples include:

- Lemon juice or orange peel juice
- Butyric acid
- Cleaning agents containing acetic acid

Avoid contact of these substances with any plastic components.

- Do not allow acidic or solvent-based substances to come into contact with appliance parts.
- Do not use abrasive cleaners.
- Remove all food from the freezer and store in a cool, well-covered place.
- Switch off the appliance and disconnect the plug from the mains, or turn off the circuit breaker or fuse.

- Clean the appliance and internal accessories using a soft cloth and lukewarm water. After cleaning, rinse with fresh water and dry thoroughly.
- Once completely dry, reconnect the appliance and return it to service.

Replacing the Lamp

The appliance is equipped with an LED interior light. To replace the lamp, please contact a qualified technician.

Troubleshooting:



CAUTION! Before performing any troubleshooting tasks, disconnect the appliance from the power supply.

- Any troubleshooting not covered in this manual must be carried out only by a qualified electrician or competent person.
- **Important:** Some operational sounds, such as the compressor running or refrigerant circulating, are normal and do not indicate a fault.

Problem	Possible Cause	Solution
Appliance does not work	Mains plug is not plugged in or is loose	Insert mains plug
	Fuse has blown or is defective	Check fuse, replace if necessary
	Socket is defective	Mains malfunctions are to be corrected by an electrician
Appliance freezes too much	Temperature is set too cold or the appliance runs at SUPER setting	Turn the temperature regulator to a warmer setting temporarily
The food is not frozen enough	Temperature is not properly adjusted	Please look in the initial Temperature Setting section
	Door was open for an extended period	Open the door only as long as necessary
	A large quantity of warm food was placed in the appliance within the last 24 hours	Turn the temperature regulator to a colder setting temporarily
	The appliance is near a heat source	Please look in the installation location section
Heavy build-up of frost on the door seal	Door seal is not air-tight	Carefully warm the leaking sections of the door seal with a hair dryer (on a cold setting). At the same time shape the warmed door seal by hand such that it sits correctly
Unusual noises	Appliance is not level	Re-adjust the feet
	The appliance is touching the wall or other objects	Move the appliance slightly
	A component, e.g. a pipe, on the rear of the appliance is touching another part of the appliance or the wall	If necessary, carefully bend the component out of the way
Side panels are hot	It's normal. Heat exchange is in the side panels	Take gloves to touch side panels if needed

If the problem persists, contact the authorized Service Centre.

To ensure a quick and accurate service, have the following information ready (refer to the appliance rating plate):

- Model number
- Serial number
- Date of purchase

Spare Parts – European Standard:

In accordance with the new European standard, the parts listed in the table below can be ordered directly from Customer Service.

Ordered Parted	Provided By	Minimum Time Required For provision.
Thermostats	Professional maintenance personnel	At least 7 years after the last model is launched on the market
Temperature Sensor	Professional maintenance personnel	At least 7 years after the last model is launched on the market
Printed Circuit board	Professional maintenance personnel	At least 7 years after the last model is launched on the market
Light Source	Professional repairers and final users	At least 7 years after the last model is launched on the market
Door Handles	Professional repairers and final users	At least 7 years after the last model is launched on the market
Door Hinges	Professional repairers and final users	At least 7 years after the last model is launched on the market
Trays	Professional repairers and final users	At least 7 years after the last model is launched on the market
Baskets	Professional repairers and final users	At least 7 years after the last model is launched on the market
Door gaskets	Professional repairers and final users	At least 10 years after the last model is launched on the market

The product data sheet for your appliance is available online.

- Visit <https://eprel.ec.europa.eu> and enter the model identifier of your appliance to download the data sheet.
- Alternatively, you can download it from www.montpellier-appliances.com by navigating to the relevant product page.

The model identifier can be found on the appliance rating plate, located at the rear or inside the appliance.

Important Note – WEEE Directive

This appliance is marked in accordance with the European Directive 2002/96/EC on Waste Electrical and Electronic Equipment (WEEE). Proper disposal of this product helps prevent potential negative impacts on the environment and human health caused by inappropriate waste handling.

The symbol of a crossed-out wheellie bin on the appliance or in its accompanying documents indicates that this product must not be treated as household waste. Instead, it should be taken to the appropriate collection point for the recycling of electrical and electronic equipment.

Disposal must comply with local environmental regulations. For more information on the treatment, recovery, and recycling of this product, please contact your local authority, household waste disposal service, or the retailer where you purchased the appliance.



We are committed to continuously improving our products for the benefit of our customers. For this reason, we reserve the right to make changes to any product at any time without prior notice.

Product Fiche

Model identifier: MDANF181W							
General product parameters:							
Parameter		Value		Parameter		Value	
Overall dimensions (millimetre)		Height	1810		Total volume (dm ³ or l)	247	
		Width	545				
		Depth	600				
EEI		100		Energy efficiency class	E		
Airborne acoustical noise emissions (dB(A) re 1 pW)		40		Airborne acoustical noise emission class	C		
Annual energy consumption (kWh/a)		227		Climate class:	subtropical, tropical		
Minimum ambient temperature (°C), for which the refrigerating appliance is suitable		16		Maximum ambient temperature (°C), for which the refrigerating appliance is suitable	38		
Winter setting		No					
Compartment Parameters:			Compartment parameters and values				
Compartment type		Compartment Volume (dm ³ or l)	Recommended temperature setting for optimised food storage (°C) These settings shall not contradict the storage conditions set out in Annex IV, Table 3	Freezing capacity (kg/24h)	Defrosting type (Auto-Defrost=A, Manual Defrost=M)		
Pantry	No	-	-	-	-		
Wine storage	No	-	-	-	-		
Cellar	No	-	-	-	-		
Fresh food	Yes	165	4	-	A		
Chill	No	-	-	-	-		
1-star	No	-	-	-	-		
2-star	No	-	-	-	-		
3-star	No	-	-	-	-		
4-star	Yes	82	-18	3,7	A		
Fast freeze facility		No					
Type of light source		LED					
Minimum duration of the guarantee offered by the supplier: 24 months							
Weblink to the supplier's website, where the information in point 4 of Annex II of Commission Regulation (EU)2019/2019 is found: https://www.montpellier-appliances.com/product-details/montpellier-mdas136w-static-fridge-freezer-in-white-2/							

Here For You

8 Here For You

8.1 After-sales assistance

If you continue to experience problems with your appliance, please call the Montpellier customer service helpline on: 03333 234473 opt 3

Please have all your product details available, including the model number, serial number, original sales invoice (clearly showing model number, date of purchase and your retailer's details) before registering a fault.

The service call cannot progress without this information.

Your 2 year Manufacturer's guarantee

THIS DOES NOT AFFECT YOUR STATUTORY RIGHTS.

Your new Montpellier appliance carries a free guarantee which protects you against the cost of repairs during the first 24 months from date of purchase provided that:

Any claim is accompanied by evidence of the model reference, model serial number and proof of purchase, such as a Sales Receipt, showing that the appliance was purchased within the 24 months prior to the date of claim.

What is not covered under the Guarantee

- Any appliance not correctly installed and operated in accordance with the manufacturer's instructions
- Any appliance that is used for anything other than domestic purposes.
- Any defect caused by accident, misuse, unauthorised modification or inexpert repair.
- Cost of Call-out where a fault cannot be found with the appliance. Cost of Call-out for work covering routine maintenance, such as, but not exclusively, cleaning of filters or defrosting.

- Cost of Call-out for work required to correct the alignment of doors following door reversal procedures carried out by you. Use of the appliance by anyone other than the Householder. Use in any commercial environment.
- Consumable items, such as, but not exclusively, fuses in plugs, bulbs and breakable items which require routine replacement. Repair costs incurred that have not been authorised by Montpellier service and/or carried out by a non-approved Montpellier engineer.
- Montpellier Appliances do not accept claims for consequential loss, rusting, corroding, delivery damage or scratches.

YOUR GUARANTEE IS VALID ONLY IN THE UK & THE REPUBLIC OF IRELAND

To register your appliance simply complete the card in your appliance pack and return it with a stamp affixed or alternatively you can register online at:

montpellier-appliances.com/support

...or by phone, call our warranty registration department on **08081 961 388**

SERVICE HELP -LINE

Should your appliance develop a fault, please call the Montpellier customer service helpline on:

03333 234473 opt 3

Please remember to have all your product details available, including the model number, serial number, date of purchase and your retailer's details before registering a fault.

Montpellier Domestic Appliances Ltd.

Unit 1, Tewkesbury Retail Park, Northway Lane,
Tewkesbury, Gloucestershire GL20 8UY

www.montpellier-appliances.com



The symbol on the product or on its packaging indicates that this product may not be treated as household waste. Instead it shall be handed over to the applicable collection point for the recycling of electrical and electronic equipment. By ensuring this product is disposed of correctly, you will help prevent potential negative consequences for the environment and human health, which could otherwise be caused by inappropriate waste handling of this product. For more detailed information about recycling of this product, please contact your local city office, your household waste disposal service or the shop where you purchased the product.