

# Montpellier

DOMESTIC APPLIANCES

LAUNDRY DISHWASHING COOKING COOLING

## Installation & Operating Instructions



Fridge Freezer in White  
**MDALF20055W**

Please read these instructions carefully before attempting to install or use this appliance.  
We recommend that you keep these instructions in a safe place for future reference.

# Welcome

Thank you for choosing this Montpellier appliance.

Your appliance has been designed to provide you with the best combination of style, reliability and performance, to give you years of trouble-free use.

You may be familiar with a similar product, but please take the time to read these instructions carefully before installing or using your appliance to ensure that you get the most from your purchase and keep the manual for future reference.

The design and specifications are subject to change without prior notice for product development.

## Montpellier

montpellier-appliances.com

# 2 YEAR GUARANTEE

**PARTS & LABOUR**

**ACROSS ALL OUR MODELS**

Your appliance is covered by a comprehensive two year Parts & Labour Guarantee. In the unlikely event that you experience a problem with your appliance, you can rest assured that you are fully protected against the cost of repairs for the first 24 months. Please note that any claim must be accompanied by the model reference number, serial number and proof of purchase.

To activate your guarantee, you will need your product serial number. This can be found inside your appliance.

**NB:** Please make sure that you keep a copy of your original sales invoice as this will be needed if any service call is required.





**There are three ways to register your Guarantee:**

**Online:** Visit the Support page on our website and complete the online Product Registration form.

[www.montpellier-appliances.com](http://www.montpellier-appliances.com)

**By Post:** Simply detach and fill in the form provided, attach a stamp and send it in the post. Don't forget to include your e-mail address so that we can send confirmation through to you.

**By Phone:** Contact our warranty registration department on **08081 961 388**

Icon	Type	Meaning
	Warning	May Cause Serious Injury
	Risk of Electric Shock	Dangerous Voltage Risk
	Fire	Warning, Risk of Fire/Flammable Materials
	Caution	Risk of Damage/ Important Information

# Contents

---

Safety Information	4
Safety Instructions	5
Installation	7
Control Panel	9
LED Lamp Replacement	10
Technical Specifications	12
Here for You	13

## **DEAR CUSTOMER:**

Thank you for buying this product. To ensure that you get the best results from this appliance, please take time to read through the simple instructions in this booklet. Please ensure that the packing material is disposed of in accordance with the current environmental requirements. When disposing of any old appliances please contact your local waste disposal department for advice on safe disposal. This appliance must only be used for its intended purpose.

## SAFETY INFORMATION

Before installing and using the appliance, read these instructions carefully. The manufacturer is not responsible for any injuries or damage resulting from incorrect installation or use. Always keep these instructions in a safe and accessible place for future reference.

### Children and Vulnerable Persons Safety

- This appliance can be used by children aged 8 years and above, and by persons with reduced physical, sensory or mental capabilities, or lack of experience and knowledge, provided they have been given supervision or instruction on safe use of the appliance and understand the hazards involved.
- Children aged between 3 and 8 years may load and unload the appliance if they have been properly instructed.
- This appliance may be used by persons with complex or severe disabilities, provided they have been properly instructed.
- Children under 3 years of age must be kept away from the appliance unless continuously supervised.
- Children should be supervised to ensure that they do not play with the appliance.
- Cleaning and user maintenance must not be carried out by children without supervision.
- Keep all packaging materials away from children and dispose of them appropriately.

### General Safety

- This appliance is intended for household and similar applications, such as:
  - farmhouses;
  - staff kitchen areas in shops, offices and other small-scale working environments;
  - by clients in bed and breakfast establishments and other residential-type environments.
- To avoid food contamination, follow these instructions:
  - Do not leave the door open for long periods.
  - Clean regularly all surfaces that may come into contact with food and accessible drainage systems.
  - Store raw meat and fish in suitable containers in the refrigerator so that they do not come into contact with or drip onto other food.
- **WARNING:** Keep ventilation openings, in the appliance enclosure or built-in structure, clear of obstruction.
- **WARNING:** Do not use mechanical devices or other means to accelerate the defrosting process, other than those recommended by the manufacturer.
- **WARNING:** Do not damage the refrigerant circuit.
- **WARNING:** Do not use electrical appliances inside the food storage compartments unless they are of a type recommended by the manufacturer.
- Do not use water spray or steam to clean the appliance.
- Clean the appliance with a soft, damp cloth. Use only neutral detergents. Do not use abrasive products, abrasive cleaning pads, solvents or metal objects.

- If the appliance is left empty for a long period, switch it off, defrost it, clean and dry it, and leave the door open to prevent mould from forming.
- Do not store explosive substances such as aerosol cans with a flammable propellant in this appliance.
- If the supply cord is damaged, it must be replaced by the manufacturer, its authorised service centre, or a similarly qualified person to avoid a hazard.

## Safety Instructions

### Installation

- ⚠ **WARNING!** Only a qualified person must install this appliance.
- Remove all packaging.
- Do not install or use a damaged appliance.
- Do not use the appliance until it has been installed in the built-in structure.
- Follow the installation instructions supplied with the appliance.
- Take care when moving the appliance as it is heavy. Always wear protective gloves and enclosed footwear.
- Ensure that air can circulate freely around the appliance.
- After installation or reversing the door, wait at least 4 hours before connecting the appliance to the power supply. This allows the oil to flow back into the compressor.
- Before carrying out any work on the appliance (e.g. reversing the door), disconnect it from the mains supply.
- Do not install the appliance near radiators, cookers, ovens or hobs.
- Do not expose the appliance to rain.
- Do not install the appliance in direct sunlight.
- Do not install this appliance in excessively humid or cold areas.
- When moving the appliance, lift it by the front edge to avoid scratching the floor.

### Electrical Connection

- ⚠ **WARNING!** Risk of fire and electric shock.
- ⚠ **WARNING!** Ensure the supply cord is not trapped or damaged when positioning the appliance.
- ⚠ **WARNING!** Do not use multi-plug adapters or extension leads.
- The appliance must be earthed.
- Ensure that the electrical ratings on the rating plate correspond to the mains power supply.
- Always use a correctly installed, shockproof socket.
- Take care not to damage electrical components (e.g. mains plug, mains cable, compressor). Contact an authorised service centre or a qualified electrician if replacement is required.
- The mains cable must remain below the level of the mains plug.
- Connect the mains plug only after installation is complete. Ensure that it remains accessible.

- Do not pull the mains cable to disconnect the appliance. Always pull the plug.

## Using the Appliance



**WARNING!** Risk of injury, burns, electric shock or fire.



The appliance contains flammable gas (isobutane, R600a), a natural gas with a high level of environmental compatibility. Take care not to damage the refrigerant circuit.

- Do not modify the specification of this appliance.
- Built-in appliances must not be used as freestanding units.
- Do not place electrical appliances (e.g. ice cream makers) inside the appliance unless approved by the manufacturer.
- If the refrigerant circuit is damaged, ensure there are no flames or ignition sources in the room and ventilate thoroughly.
- Do not allow hot items to come into contact with plastic parts.
- Do not place soft drinks in the freezer compartment, as this may create pressure in the container.
- Do not store flammable gases or liquids in the appliance.
- Do not place flammable materials in, on or near the appliance.
- Do not touch the compressor or condenser, as they become hot.
- Do not remove or touch items from the freezer with wet or damp hands.
- Do not refreeze food that has been thawed.
- Follow the storage instructions on food packaging.
- Wrap food in suitable food-safe material before placing it in the freezer.

## Internal Lighting



**WARNING!** Risk of electric shock.

- This product contains a light source with an energy efficiency rating of Class G.
- The internal lamps are designed to withstand extreme conditions (temperature, vibration, humidity) and to indicate the operational status of the appliance. They are not suitable for room lighting.

## Care and Cleaning



**WARNING!** Risk of injury or damage to the appliance.

- Before maintenance, switch off the appliance and disconnect it from the mains supply.
- This appliance contains hydrocarbons in the cooling unit. Maintenance and recharging must only be carried out by a qualified person.
- Regularly check the drain and clean it if necessary. If blocked, defrost water may collect at the bottom of the appliance.

## Service

- To repair the appliance, contact an authorised service centre and use only original spare parts.
- Self-repair or non-professional repair may be unsafe and could invalidate the guarantee.

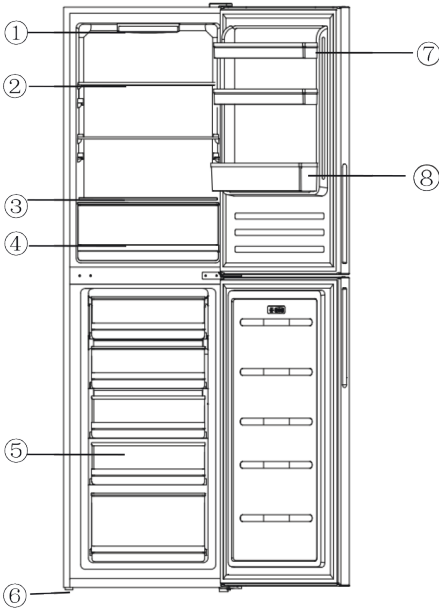
- The following spare parts will be available for 7 years after the model is discontinued: thermostats, temperature sensors, printed circuit boards, light sources, door handles, door hinges, trays and baskets. Some parts are only available to professional repairers and may not apply to all models.
- Door seals will be available for 10 years after the model is discontinued.

### **Disposal**

- ⚠ **WARNING!** Risk of injury or suffocation.
- Disconnect the appliance from the mains supply.
- Cut off and discard the mains cable.
- Remove the door to prevent children or pets from becoming trapped inside.
- The refrigerant circuit and insulation materials are environmentally friendly.
- The insulation foam contains flammable gas. Contact your local authority for guidance on correct disposal.
- Do not damage the cooling unit, particularly near the heat exchanger.

### **Installation**

- ⚠ **WARNING!** Refer to the Safety sections.
- ⚠ **WARNING!** Refer to the installation instructions provided with the appliance.
- ⚠ **WARNING!** Install the appliance in accordance with the installation instructions to prevent the risk of instability.



TRF-36LEA	
No.	Description
①	Electronic control board
②	Glass shelf
③	Crisper Cover
④	Crisper
⑤	Freezer drawer
⑥	Adjustable feet
⑦	Upper Door balcony
⑧	Lower balcony

### Positioning

Install the appliance in a location where the ambient temperature corresponds to the climate class indicated on the rating plate:

- Extended temperate (SN): This appliance is intended for use at ambient temperatures between 10°C and 32°C.
- Temperate (N): This appliance is intended for use at ambient temperatures between 16°C and 32°C.
- Subtropical (ST): This appliance is intended for use at ambient temperatures between 16°C and 38°C.
- Tropical (T): This appliance is intended for use at ambient temperatures between 16°C and 43°C.

### Food Placement in the Fridge

Store different types of food in the appropriate compartments, as shown in the table below.

For most foods, the longest storage time is achieved at lower temperatures. However,

Refrigerator compartment	Type of food
Door or balconies of fridge compartment	<ul style="list-style-type: none"> <li>• Foods with natural preservatives, such as jams, juices, drinks, condiments.</li> <li>• Do not store perishable foods</li> </ul>
Crisper drawers (salad drawer)	<ul style="list-style-type: none"> <li>• Fruits, herbs and vegetables should be placed separately in the crisper</li> </ul> <p>Do not store bananas, onions, potatoes, garlic in the refrigerator</p>

some items (such as fresh fruit and vegetables) may be damaged by very low temperatures. These should be stored in the crisper drawers, where available. If no crisper drawers are present, maintain a moderate temperature setting.

### Thermostat Recommendations

Fridge shelf – middle	<ul style="list-style-type: none"> <li>Dairy products, eggs</li> </ul>
Fridge shelf – top	<ul style="list-style-type: none"> <li>Foods that do not need cooking, such as ready-to-eat meals, deli meats &amp; leftovers.</li> </ul>
Freezer drawer(s)/tray	<ul style="list-style-type: none"> <li>Foods for long-term storage</li> <li>Bottom drawer for raw meat, poultry, fish</li> <li>Middle drawer for frozen vegetables, chips.</li> <li>Top tray for ice cream, frozen fruit, frozen baked goods.</li> </ul>

- It is recommended to set the fridge temperature to 4°C and, where applicable, the freezer temperature to -18°C.
- For frozen food, refer to the storage time indicated on the packaging. This is based on the correct compartment temperatures (one-star: -6°C, two-star: -12°C, three-star: -18°C).


### Control Panel



The control panel is shown above. Only the left and right buttons are used to operate the refrigerator.

- The button  is used to switch the

appliance on or off. Press and hold for 3 seconds to activate or deactivate the appliance.

- The appliance is equipped with a power memory function, which retains settings in the event of a power failure.
- The button  is used to adjust the temperature:
  - Press the button to change the setting. The selected value will flash.
  - After 5 seconds, the flashing stops and the selected temperature is confirmed.
  - Continue pressing the button until the desired setting is selected.

The available settings are: Super Cooling, 2°C, 3°C, 4°C, 6°C and 8°C, which indicate the approximate internal temperature of the fridge.

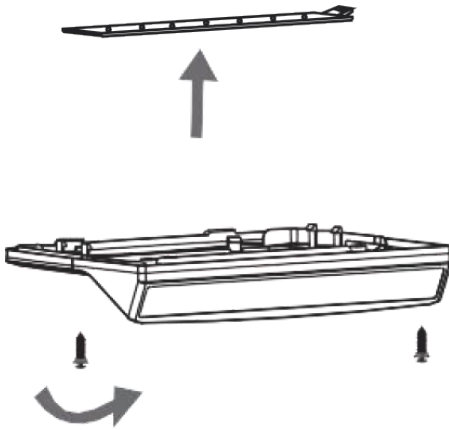
### Super Cooling Function

When Super Cooling is selected, the refrigerator will operate at 2°C for 24 hours. After this period, the function will automatically switch off and return to the previously selected temperature.

Position	Conditions
2&3	Summer or ambient temperature between 25-35 °C
4	Spring, autumn or ambient temperature between 15-25 °C
6&8	Winter, or ambient temperature between 5-15 °C

**Note:** Avoid using Super Cooling or maintaining a constant setting of 2°C for extended periods, as this may place unnecessary strain on the compressor and cooling system.

## LED Lamp Replacement



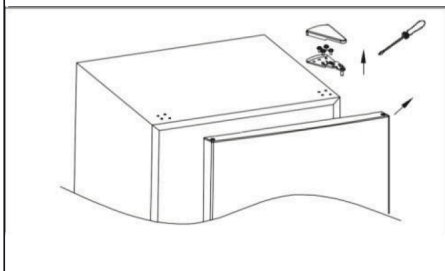
**Note:** The LED lamp must only be replaced by a qualified engineer.

Lamp specification: 12V / 5W

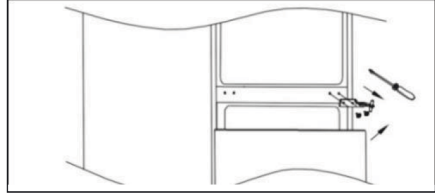
To replace the lamp:

1. Disconnect the appliance from the mains supply.
2. Remove the lamp cover using a screwdriver.
3. Remove the faulty lamp and replace it with a new one of the same type.
4. Refit the lamp cover and secure it with screws.

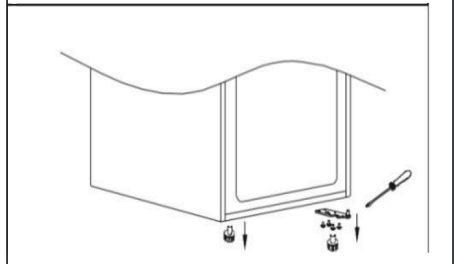
1. Make sure that the refrigerator is unplugged, pry the hinge cover up and off, remove four screws that secure the upper hinge to the door and remove the upper hinge, then remove the fridge door.



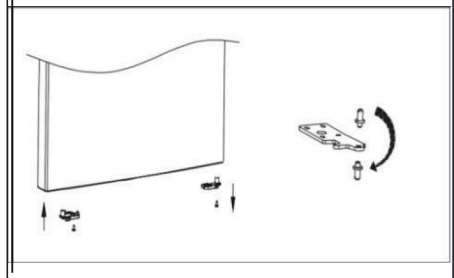
2. Remove two screws that secure the center hinge.



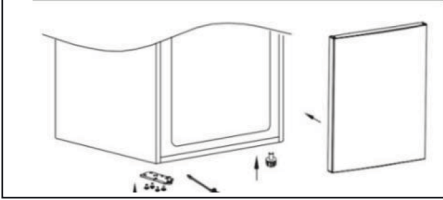
3. Remove the screws that secure the lower hinge to the right side of the cabinet, then the hinge and adjustable feet.



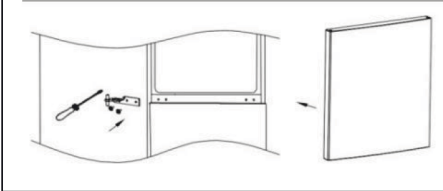
4. Remove the right door stopper on the bottom of fridge and freezer door, then get the left door stopper from the accessory bag, install it on the bottom left side of fridge door and freezer door. Remove the pin shaft and install to other side.



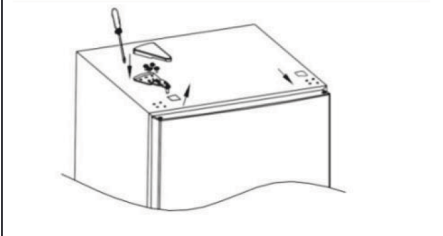
6. Install the bottom hinge to the left side of cabinet, then install two adjustable feet on the current position, then install the freezer door.



7. Install the center hinge to the left side, then install the fridge door at the same time.



8. Remove the left hinge hole cover to right side, then install the upper hinge and hinge cover on the left side of cabinet.



# Product Fiche

<b>Model identifier: MDALF20055W</b>					
<b>General product parameters:</b>					
Parameter		Value		Parameter	Value
Overall dimensions (millimetre)	Height	2040		Total volume (dm <sup>3</sup> or l)	302
	Width	545			
	Depth	555			
EEI		100		Energy efficiency class	E
Airborne acoustical noise emissions (dB(A) re 1 pW)		39		Airborne acoustical noise emission class	C
Annual energy consumption (kWh/a)		233		Climate class:	extended temperate, temperate, subtropical
Minimum ambient temperature (°C), for which the refrigerating appliance is suitable		10		Maximum ambient temperature (°C), for which the refrigerating appliance is suitable	38
Winter setting		No			
<b>Compartment Parameters:</b>			<b>Compartment parameters and values</b>		
Compartment type		Compartment Volume (dm <sup>3</sup> or l)	Recommended temperature setting for optimised food storage (°C) These settings shall not contradict the storage conditions set out in Annex IV, Table 3	Freezing capacity (kg/24h)	Defrosting type (Auto-Defrost=A, Manual Defrost=M)
Pantry	No	-	-	-	-
Wine storage	No	-	-	-	-
Cellar	No	-	-	-	-
Fresh food	Yes	185	4	-	M
Chill	No	-	-	-	-
1-star	No	-	-	-	-
2-star	No	-	-	-	-
3-star	No	-	-	-	-
4-star	Yes	117	-18	5,9	M
Fast freeze facility		No			
Minimum duration of the guarantee offered by the supplier: 24 months					
Weblink to the supplier's website, where the information in point 4 of Annex II of Commission Regulation (EU)2019/2019 is found: <a href="https://www.montpellier-appliances.com/">https://www.montpellier-appliances.com/</a>					

# Here For You

---

## Here For You

### After-sales assistance

If you continue to experience problems with your appliance, please call the Montpellier customer service helpline on: 03333 234473 opt 3

Please have all your product details available, including the model number, serial number, original sales invoice (clearly showing model number, date of purchase and your retailer's details) before registering a fault.

The service call cannot progress without this information.

### Your 2 year Manufacturer's guarantee

THIS DOES NOT AFFECT YOUR STATUTORY RIGHTS.

Your new Montpellier appliance carries a free guarantee which protects you against the cost of repairs during the first 24 months from date of purchase provided that:

Any claim is accompanied by evidence of the model reference, model serial number and proof of purchase, such as a Sales Receipt, showing that the appliance was purchased within the 24 months prior to the date of claim.

### What is not covered under the Guarantee

- Any appliance not correctly installed and operated in accordance with the manufacturer's instructions
- Any appliance that is used for anything other than domestic purposes.
- Any defect caused by accident, misuse, unauthorised modification or inexpert repair.
- Cost of Call-out where a fault cannot be found with the appliance. Cost of Call-out for work covering routine maintenance, such as, but not exclusively, cleaning of filters or defrosting.

- Cost of Call-out for work required to correct the alignment of doors following door reversal procedures carried out by you. Use of the appliance by anyone other than the Householder. Use in any commercial environment.
- Consumable items, such as, but not exclusively, fuses in plugs, bulbs and breakable items which require routine replacement. Repair costs incurred that have not been authorised by Montpellier service and/or carried out by a non-approved Montpellier engineer.
- Montpellier Appliances do not accept claims for consequential loss, rusting, corroding, delivery damage or scratches.

YOUR GUARANTEE IS VALID ONLY IN THE UK & THE REPUBLIC OF IRELAND

To register your appliance simply complete the card in your appliance pack and return it with a stamp affixed or alternatively you can register online at:

[montpellier-appliances.com/support](http://montpellier-appliances.com/support)

...or by phone, call our warranty registration department on **08081 961 388**

### SERVICE HELP -LINE

Should your appliance develop a fault, please call the Montpellier customer service helpline on:

**03333 234473 opt 3**

Please remember to have all your product details available, including the model number, serial number, date of purchase and your retailer's details before registering a fault.





**Montpellier Domestic Appliances Ltd.**

Unit 1, Tewkesbury Retail Park, Northway Lane,  
Tewkesbury, Gloucestershire GL20 8UY

**[www.montpellier-appliances.com](http://www.montpellier-appliances.com)**



The symbol on the product or on its packaging indicates that this product may not be treated as household waste. Instead it shall be handed over to the applicable collection point for the recycling of electrical and electronic equipment. By ensuring this product is disposed of correctly, you will help prevent potential negative consequences for the environment and human health, which could otherwise be caused by inappropriate waste handling of this product. For more detailed information about recycling of this product, please contact your local city office, your household waste disposal service or the shop where you purchased the product.