



Redefine washing with purified water. keep the new look and feel of clothes

The 9000 AbsoluteCare® Washing Machine uses our unique ground-breaking technology to filter and purify the water it utilises, which ensures that colours won't fade.* Providing your clothing with our best care by reducing shrinkage and shape loss.**

*External test for colorfastness on black polyester after 50 cycles in 30 degrees with Softwater technology

**Internal test showing less shrinkage on several cotton fabrics washed with SoftWater technology with hard water in a Cotton cycle vs unfiltered hard water

Product Benefits & Features

AbsoluteCare® with SoftWater technology. no fading.* shapes protected**

Protects fabrics and colours. SoftWater Technology filters harsh minerals from the laundry water which reduces colour fading for the first 50 washes* and reduces shape loss.** Helping clothes last longer and providing superior colour protection.

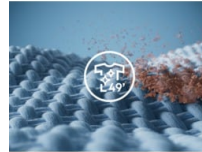


*External test for colorfastness on black polyester after 50 cycles in 30 degrees with SoftWater technology

**Internal test showing less shrinkage on several cotton fabrics washed with SoftWater technology with hard water in a Cotton cycle vs unfiltered hard water.

Absolutewash 49 min cleans at 30°C and provides complete stain removal*

AbsoluteWash 49 min is a powerful programme that thoroughly cleans clothes at 30°C and in under 1-hour. It filters water to boost detergent power, providing proven complete stain removal.* Using 30% less energy compared to 40°C Cotton programme.*



*External test of AbsoluteWash 49 min 30°C programme with 5 kg load shows 100 % stain removal of 59 most common household stains. **Based on internal test comparing energy consumption of the 40°C cotton programme with the 49 min 30°C AbsoluteWash programme

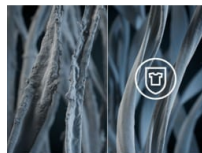
The next level of appliance interaction with AEG Connected

Use the AEG app to personalise settings and get smart tips and suggestions. Customise laundry cycles and send instructions to your appliance to adapt it to your needs and habits. Smart and easy care via your smart phone.



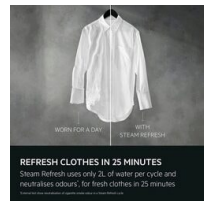
Efficient cleaning in less than 1 hour at only 30°C

PowerCare uses a unique technique to quickly pre-mix detergent, ensuring it gets sprayed evenly on your clothes for remarkably clean laundry. Activating detergent power even at 30°C, for outstanding washing results in less than one hour.



GARMENTS REFRESHED,* WRINKLES REDUCED WITH STEAM REFRESH

Steam Refresh neutralises odours* and reduces wrinkles on garments, including delicates, in just 25 minutes. And if you like an extra boost of freshness, just add our aromatic steam fragrance. Giving it that just washed freshness.



*External test show neutralisation of cigarette smoke odour in a Steam Refresh cycle.

- Includes 5 year warranty
- Capacity guide: Suitable for a small family.
- AbsoluteWash49: A powerful 49 minute programme that thoroughly cleans clothes at just 30°C and in under 1-hour.
- AbsoluteCare®: This washing machine uses our unique technology to filter and purify the water it utilises, helping to preserve colours and prevent fading.
- Delicates: Gently washes the most delicate of fabrics.
- ProSteam®: Refresh clothes with a gentle steam cycle, using only 2L of water, ideal for garments that don't need a full wash.
- Steam refresh: Neutralise odours and reduces wrinkles on garments, including delicates, in just 25 minutes.
- PlusSteam: Allows you to finish a wash cycle with a burst of steam.

- Internal light: For optimal visibility in the drum.
- Connectivity: Control your washing machine via your smartphone or tablet
- TimeSave: Cuts cycle time by up to half for a faster, flexible wash.
- Finish in: Choose when you want your washing cycle to finish.
- Prewash option

Product Specification

Washing Capacity (Kg)	10	Woolmark	Woolmark Green + WoolCare
Max Spin Speed (rpm)	1400	Drawer Compartments	Ariel/Lenor
Program List	20min 3Kg, Absolutewash 49Min, Cottons, Delicates, Eco 40-60, Hygiene, OutDoor, Rinse, Spin/Drain, Steam, Synthetics, Wool	Product Number (PNC)	All Open
Push Button Functions	-, +, Extra Rinse, Finish In, ON/OFF, Plus Steam, Prewash/Stain, Remote Start, Spin, Start/Pause, Temp, TIME SAVE	Series	9000 Series
Noise Rating (dB)	A	Connectivity	Yes
Inlet Hose Length (cm)	150	Spin Energy Rating	B
Dimensions (mm) (HxWxD)	847x597x660(max)	Remaining Moisture (%)	53.9
Outlet Hose Length (cm)	145	Energy Consumption per 100 wash cycles (kWh)	20
Depth max (mm)	660	Noise level, dB(A) (EU 2017/1369)	72
Motor Type	Inverter Motor+	Eco 40-60 Programme Duration (Hours & Minutes)	3:55
Drum Volume (L)	73	Push Button Functions	Finish in, Remote Start, Rinse, Start/Pause, Steam Anticrease, Time Save
Display	Large LED	Energy Rating	A
Cord Length (m)	1.62	Net weight (kg)	85.5
Total Electricity Loading (W)	2100	Gross weight (kg)	87
Plug or Hardwired	U.K.	Main Colour	White
Wheels/Feet	4 adjustable feet		
Voltage (V)	230-240		
Recommended fuse (A)	13		
Frequency (Hz)	50		

